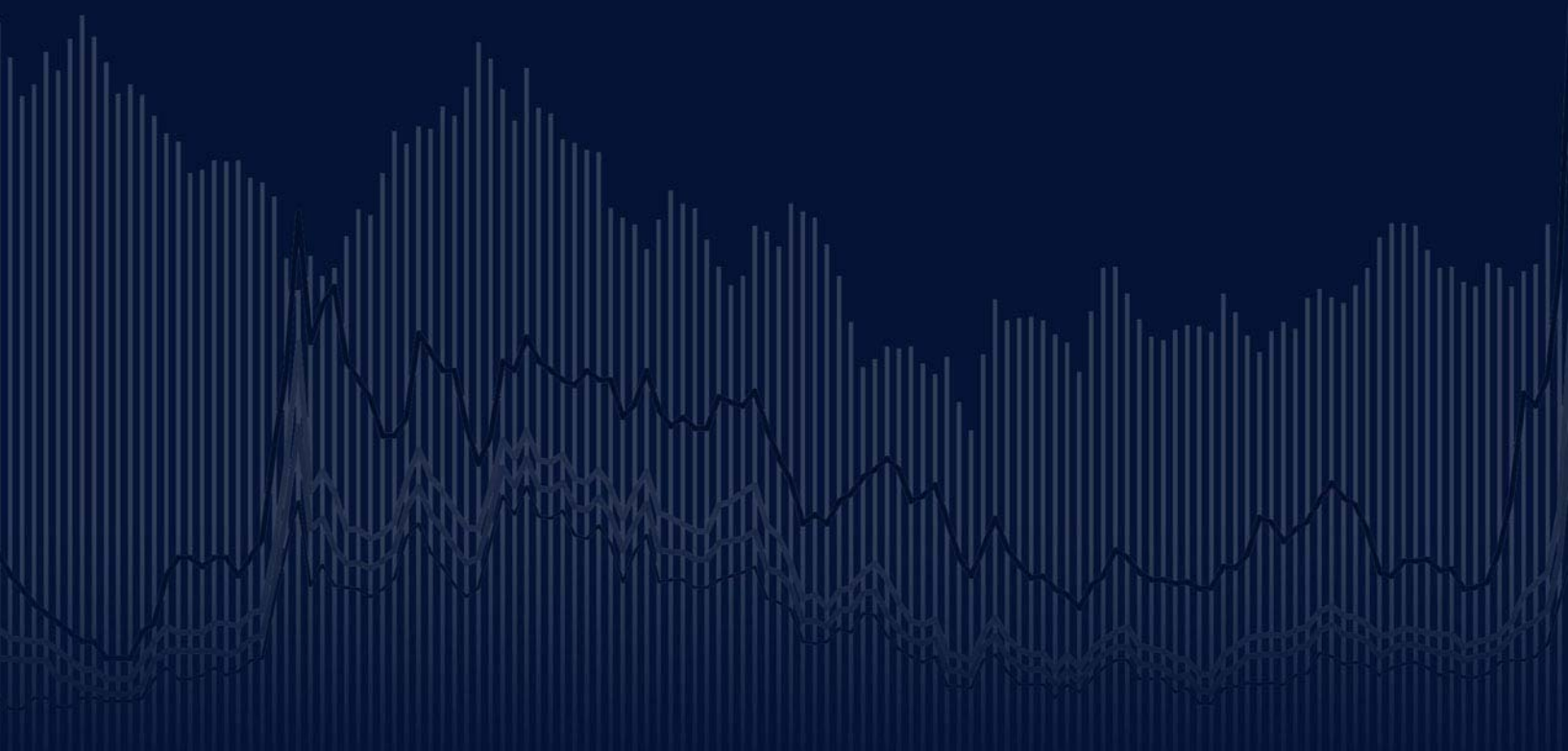


A green square is positioned in the top left corner. Below it, a horizontal strip shows a city skyline with various skyscrapers.

COMPENDIUM OF STATISTICS

A complex line graph with multiple overlapping lines is displayed in the background, showing fluctuating data points.

Last Update: January 29, 2010



**COMMERCIAL MORTGAGE
SECURITIES ASSOCIATION**

Commercial Mortgage Securities Association, 30 Broad Street, 28th Floor, New York, New York
www.cmsaglobal.org / 212-509-1844

COMPENDIUM OF STATISTICS

TABLE OF CONTENTS

Exhibit	Page
1 CMBS Issuance by Month 2006-2008	3
2 CRE CDO Issuance by Month 2000-2008	4
3 CMBS Issuance: U.S. / Europe / Other	5
4 CMBS Issuance by Country	6
5 CMBS Delinquencies – Monthly	7
6 CMBS Delinquencies – Quarterly by Property Type	8
7 CMBS Delinquencies – Quarterly by Property Type Chart	9
8 CMBS vs. RMBS Delinquencies	10
9 Residential Delinquencies by Loan Number	11
10 CMBS by Regions	12
11 CMBS Breakdowns by Deal and Property Type	13
12 Interest Rates and CMBS Issuance	14
13 CMBS Spreads and Swap Spreads	15
14 CMBS Spreads over Treasuries: Investment Grade	16
15-16 CMBX Prices	17
17 <i>Discontinued</i>	19
18 Top CMBS & CDO Portfolios Among Insurers	20
19 Holders of Commercial & Multifamily Mortgage Loans – Historical Data	21
20 Holders of Commercial & Multifamily Mortgage Loans – Percentage Distribution	22
21 Mortgage Securitization Levels	23
22 U.S. Property Vacancy Rates	24
23 U.S. Property Returns	25
24 Global Property Returns	26
25 Real Estate Properties Sales Volume – Properties over \$5 million	27
26 Sales of Large Commercial Properties	28
27 Capitalization Rates – U.S. Core Properties over \$5 million	29
28 Private Residential and Nonresidential Construction in Place	30

APPENDIX

Exhibit	Page
A1 CMBS Issuance – Top Ten	31
A2 CMBS Issuance by Month 1990 – 2008	32
A3 CMBS Delinquencies by Year of Securitization	39
A4 CMBX Spreads – Through 4/17/2009	44



Exhibit 1

CMBS Issuance by Month: 2006-2009

(\$ millions)

Updated January 29, 2010

	United States		Europe		Other		Total		Total Change from Previous Year	
	Monthly	Quarterly	Monthly	Quarterly	Monthly	Quarterly	Monthly	Quarterly	Month	YTD
2009 January	0.0		7,648.2		0.0		7,648.2		128.6%	306.8%
February	0.0		9,660.6		154.7		9,815.3		-85.3%	3.0%
March	0.0		56.3		838.9		895.2			
1Q		0.0		17,365.1		993.6		18,358.7		
April	0.0		0.0		167.6		167.6		-98.1%	-98.1%
May	0.0		0.0		0.0		0.0		-100.0%	-98.3%
June	638.5		3,844.1		802.4		5,285.0		264.1%	101.6%
2Q		638.5		3,844.1		970.0		5,452.6		
July	250.0		594.1		18.2		862.3		-48.4%	-48.4%
August	0.0		0.0		222.9		222.9		347.6%	-37.0%
September	0.0		931.0		13.4		944.4		-79.6%	-75.1%
3Q		250.0		1,525.1		254.5		2,029.6		
October	80.6		0.0		0.0		80.6		-89.8%	-89.8%
November	400.0		0.0		0.0		400.0		243.1%	-47.1%
December	1,704.4		0.0		133.6		1,838.0		230.5%	232.6%
4Q		2,185.0		0.0		133.6		2,318.6		
Year		3,073.6		22,734.3		2,351.7		28,159.6		
2008 January	0.0		0.0		0.0		0.0		-100.0%	-100.0%
February	1,233.9		3,059.4		0.0		4,293.3		-84.4%	-86.7%
March	4,670.6		0.0		1,430.3		6,100.9		-87.6%	-87.2%
1Q		5,904.5		3,059.4		1,430.3		10,394.2		
April	4,022.9		453.1		4,276.1		8,752.1		-61.0%	-81.5%
May	948.8		0.0		221.4		1,170.2		-96.0%	-84.7%
June	1,269.7		0.0		181.8		1,451.5		-97.5%	-88.7%
2Q		6,241.4		453.1		4,679.3		11,373.8		
July	0.0		792.0		879.8		1,671.8		-94.4%	-89.4%
August	0.0		0.0		49.8		49.8		-99.9%	-90.9%
September ^{1/}	0.0		4,421.9		207.6		4,629.5		-62.3%	-89.6%
3Q		0.0		5,213.9		1,137.2		6,351.1		
October	0.0		724.7		67.0		791.7		-90.8%	-90.0%
November	0.0		116.6		0.0		116.6		-99.5%	-91.6%
December	0.0		0.0		556.2		556.2		-95.7%	-91.8%
4Q		0.0		841.3		623.2		1,464.5		
Year		12,145.9		9,567.7		7,870.0		29,583.6		
2007 January	1,554.5		2,372.3		831.0		4,757.8		-35.1%	-35.1%
February	21,123.8		4,630.3		1,682.8		27,436.9		78.2%	41.7%
March	38,477.4		10,074.9		461.0		49,013.3		31.5%	35.4%
1Q		61,155.7		17,077.5		2,974.8		81,208.0		
April	17,318.6		3,853.1		1,283.6		22,455.3		80.2%	43.1%
May	21,157.2		6,431.6		1,575.9		29,164.7		115.3%	54.5%
June	37,356.5		19,574.2		2,112.8		59,043.5		72.2%	59.5%
2Q		75,832.3		29,858.9		4,972.3		110,663.5		
July	21,796.8		6,673.7		1,301.6		29,772.1		23.5%	53.5%
August	29,903.9		3,663.4		1,643.2		35,210.5		135.7%	61.2%
September	8,238.8		0.0		4,052.2		12,291.0		-62.2%	40.3%
3Q		59,939.5		10,337.1		6,997.0		77,273.6		
October	6,271.4		466.5		1,843.4		8,581.3		-70.2%	25.9%
November	17,101.6		4,114.9		3,577.9		24,794.4		-30.5%	18.0%
December	9,892.4		2,208.4		745.1		12,845.9		-69.3%	5.8%
4Q		33,265.5		6,789.8		6,166.4		46,221.7		
Year		230,193.0		64,063.3		21,110.5		315,366.8		
2006 January	6,197.9		986.1		142.6		7,326.6		-21.1%	-21.1%
February	11,926.9		2,333.2		1,136.4		15,396.5		62.8%	21.2%
March	28,335.0		7,979.1		954.7		37,268.8		46.9%	36.0%
1Q		46,459.9		11,298.4		2,233.7		59,992.0		
April	6,023.2		2,810.2		3,624.7		12,458.1		-35.0%	14.5%
May	10,855.1		2,376.5		317.3		13,548.9		-9.6%	9.9%
June	25,505.7		7,325.8		1,452.7		34,284.2		22.1%	13.1%
2Q		42,384.0		12,512.5		5,394.7		60,291.2		
July	5,903.6		17,768.9		426.8		24,099.3		62.2%	19.1%
August	12,094.7		2,557.5		285.9		14,938.1		-34.7%	10.6%
September	23,407.3		7,222.0		1,894.8		32,524.1		86.7%	18.8%
3Q		41,405.6		27,548.4		2,607.5		71,561.5		
October	22,267.9		3,704.3		2,788.1		28,760.3		7.1%	17.1%
November	20,271.5		13,241.6		2,153.0		35,666.1		90.6%	23.8%
December	29,865.1		10,097.3		1,859.0		41,821.4		32.8%	25.0%
4Q		72,404.6		27,043.2		6,800.1		106,247.9		
Year		202,654.1		78,402.5		17,036.0		298,092.6		

^{1/} As of September 30, 2008

Source: Commercial Mortgage Alert. See Appendix - Table 1 for data from 1990 to 2005.

© 2008 CMSA - Commercial Mortgage Securities Association, all rights reserved.



Exhibit 2

CRE CDO Issuance by Month

(\$ millions)

Updated January 20, 2009

	<u>2000</u>	<u>2001</u>	<u>2002</u>	<u>2003</u>	<u>2004</u>	<u>2005</u>	<u>2006</u>	<u>2007</u>	<u>2008</u>
January	0.0	0.0	0.0	0.0	0.0	527.9	290.0	600.0	73.2
February	0.0	1,499.6	421.3	1,519.2	50.4	2,698.1	2,901.3	2,498.7	0
March	0.0	697.3	1,000.0	850.0	1,808.6	462.8	4,240.9	4,999.2	35.2
1Q	0.0	2,196.9	1,421.3	2,369.2	1,859.0	3,688.8	7,432.2	8,097.9	108.4
April	0.0	0.0	972.0	75.9	690.9	1,426.2	2,467.5	1,710.2	0
May	0.0	1,456.9	1,792.3	134.7	0.0	869.4	2,075.7	5,818.4	5,292.2
June	48.7	0.0	510.3	493.5	414.3	3,565.3	2,179.0	8,986.0	5813
2Q	48.7	1,456.9	3,274.6	704.1	1,105.2	5,860.9	6,722.2	16,514.6	11,105.2
July	0.0	0.0	0.0	0.0	1,839.8	1,039.2	4,141.7	6,342.8	0
August	0.0	0.0	1,747.8	816.4	0.0	3,171.0	4,748.3	2,600.0	0
September	0.0	500.0	506.8	500.0	1,697.8	1,844.7	2,255.0	94.2	0
3Q	0.0	500.0	2,254.6	1,316.4	3,537.6	6,054.9	11,145.0	9,037.0	0.0
October	1,099.4	0.0	0.0	395.0	1,305.3	2,213.7	4,242.8	5,660.4	0
November	0.0	350.0	4,744.9	325.0	515.0	975.0	4,819.2	0.0	0
December	0.0	0.0	1,196.4	495.2	305.3	2,929.6	5,452.9	1,905.4	0
4Q	1,099.4	350.0	5,941.3	1,215.2	2,125.6	6,118.3	14,514.9	7,565.8	0
Annual	<u>1,148.1</u>	<u>4,503.8</u>	<u>12,891.8</u>	<u>5,604.9</u>	<u>8,627.4</u>	<u>21,722.9</u>	<u>39,814.3</u>	<u>41,215.3</u>	<u>11,213.6</u>
Percentage Change (Year / Year)									
By Dollar		292.3%	186.2%	-56.5%	53.9%	151.8%	83.3%	3.5%	

Source: Commercial Mortgage Alert.

Includes both US and European issues. Includes Re-remics.

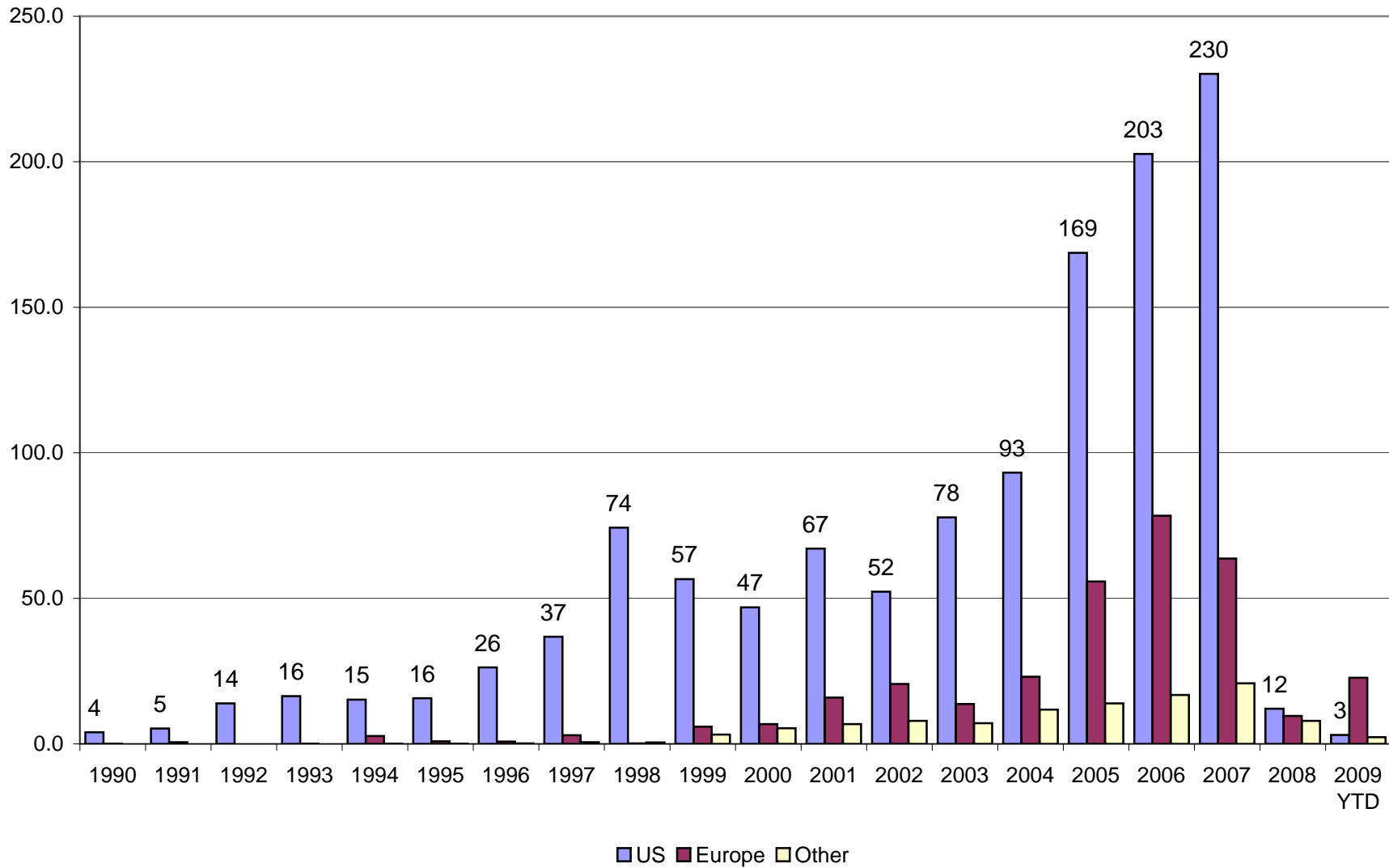
Data may defer from previous reports due to changes in definitions and other revisions.

© 2008 CMSA - Commercial Mortgage Securities Association, all rights reserved.



Exhibit 3
CMBS Issuance
(\$ billions)

Updated January 29, 2010



Source: Commercial Mortgage Alert. See Exhibit 1 for underlying data.

© 2008 CMSA - Commercial Mortgage Securities Association, all rights reserved.



Exhibit 4

CMBS Issuance by Country

(\$ millions)

Updated January 29, 2010

Total Issuance	Recent Years by dollar										Recent Years by % Allocation				
	2009YTD	2008	2007	2006	2005	2004	2003	2002	2001	2000	2007	2003	2000		
United States	1,223,894.8	73.7%	3,073.6	12,145.9	230,193.0	202,654.1	168,734.5	93,306.4	77,848.1	52,073.6	67,149.9	46,894.4	73.0%	72.8%	79.5%
United Kingdom	149,071.1	9.0%	3,630.9	1,177.8	19,187.8	38,006.3	35,220.0	15,245.9	7,063.7	5,990.7	10,699.1	4,701.3	6.1%	11.9%	8.0%
Japan	59,458.0	3.6%	1,259.6	3,348.6	14,806.8	6,861.5	7,517.2	6,887.4	3,172.8	4,630.9	4,804.1	4,009.0	4.7%	5.4%	6.8%
Pan-European	62,479.7	3.8%	10,514.2	6,006.0	22,772.7	12,909.4	2,497.8	2,883.6	939.4	1,123.8	1,536.5	1,296.3	7.2%	2.2%	2.2%
Germany	53,726.5	3.2%	7,346.2	2,145.3	14,662.5	22,050.0	4,057.4	352.4	1,004.0	601.2	0.0	0.0	4.6%	0.3%	0.0%
Italy	22,951.7	1.4%	0.0	0.0	0.0	2,168.4	9,370.8	180.5	515.2	7,790.3	2,312.6	385.5	0.0%	0.1%	0.7%
Canada	19,912.6	1.2%	670.0	0.0	3,235.2	4,256.8	2,915.5	1,927.5	2,421.0	1,360.5	1,016.0	886.4	1.0%	1.5%	1.5%
France	13,177.1	0.8%	0.0	0.0	2,081.6	1,480.5	481.0	1,735.1	2,686.4	882.7	590.0	0.0	0.7%	1.4%	0.0%
Netherlands	12,453.3	0.8%	0.0	238.6	5,358.7	1,332.0	2,859.6	1,076.5	0.0	1,409.7	178.2	0.0	1.7%	0.8%	0.0%
Australia	12,195.3	0.7%	222.9	0.0	1,173.6	3,231.6	1,611.2	1,346.3	1,434.8	1,698.8	864.5	283.0	0.4%	1.1%	0.5%
Global	4,651.0	0.3%	0.0	0.0	0.0	0.0	0.0	717.5	469.0	2,496.1	253.8	0.0	0.0%	0.6%	0.0%
Singapore	4,571.7	0.3%	167.6	0.0	972.4	838.1	1,112.6	1,175.3	74.6	121.0	110.1	0.0	0.3%	0.9%	0.0%
Sweden	3,388.2	0.2%	0.0	0.0	0.0	0.0	348.8	926.0	0.0	271.0	241.2	375.4	0.0%	0.7%	0.6%
Hong Kong	2,229.8	0.1%	0.0	0.0	0.0	0.0	306.7	0.0	0.0	0.0	0.0	179.5	0.0%	0.0%	0.3%
South Africa	1,584.0	0.1%	31.6	129.6	496.2	560.0	237.8	128.8	0.0	0.0	0.0	0.0	0.2%	0.1%	0.0%
Oman	925.0	0.1%	0.0	0.0	0.0	925.0	0.0	0.0	0.0	0.0	0.0	0.0	0.0%	0.0%	0.0%
Switzerland	805.2	0.0%	0.0	0.0	0.0	0.0	0.0	0.0	805.2	0.0	0.0	0.0	0.0%	0.0%	0.0%
Spain	668.2	0.0%	0.0	0.0	0.0	0.0	668.2	0.0	0.0	0.0	0.0	0.0	0.0%	0.0%	0.0%
Thailand	642.3	0.0%	0.0	0.0	174.4	218.0	249.9	0.0	0.0	0.0	0.0	0.0	0.1%	0.0%	0.0%
Ireland	455.9	0.0%	0.0	0.0	0.0	455.9	0.0	0.0	0.0	0.0	0.0	0.0	0.0%	0.0%	0.0%
Austria	315.3	0.0%	0.0	0.0	0.0	0.0	315.3	0.0	0.0	0.0	0.0	0.0	0.0%	0.0%	0.0%
Mexico	301.7	0.0%	0.0	0.0	104.2	0.0	0.0	56.6	0.0	0.0	54.2	0.0	0.0%	0.0%	0.1%
Malaysia	433.0	0.0%	0.0	181.8	132.8	0.0	0.0	0.0	0.0	118.4	0.0	0.0	0.0%	0.0%	0.0%
Taiwan	274.6	0.0%	0.0	0.0	84.7	0.0	52.6	137.3	0.0	0.0	0.0	0.0	0.0%	0.1%	0.0%
China	244.1	0.0%	0.0	0.0	0.0	145.0	0.0	99.1	0.0	0.0	0.0	0.0	0.0%	0.1%	0.0%
Belgium	184.0	0.0%	0.0	0.0	0.0	0.0	0.0	0.0	130.5	0.0	53.5	0.0	0.0%	0.0%	0.1%
Poland	86.3	0.0%	0.0	0.0	0.0	0.0	0.0	0.0	86.3	0.0	0.0	0.0	0.0%	0.0%	0.0%
UAE	63.0	0.0%	0.0	0.0	63.0	0.0	0.0	0.0	0.0	0.0	0.0	0.0	0.0%	0.0%	0.0%
Other	8,563.7	0.5%	0.0	3,950.1	0.0	0.0	0.0	0.0	0.0	210.8	0.0	0.0	0.0%	0.0%	0.0%
Non-US	435,812.4	26.3%	23,843.0	17,177.8	85,306.6	95,438.5	69,822.4	34,875.8	20,802.9	28,705.9	22,713.8	12,116.4	27.0%	27.2%	20.5%
Europe	319,762.5	19.3%	21,491.3	9,567.7	64,063.3	78,402.5	55,818.9	22,400.0	13,230.7	18,069.4	15,611.2	6,758.5	20.3%	17.5%	11.5%
Total	1,659,707.2	100.0%	26,916.6	29,323.7	315,499.6	298,092.6	238,556.9	128,182.2	98,651.0	80,779.5	89,863.7	59,010.8	100.0%	100.0%	100.0%

Total issuance includes years not shown. Excludes agency deals and CRE CDOs. Global issuance distributed based on majority allocation.

Source: Commercial Mortgage Alert

© 2008 CMSA - Commercial Mortgage Securities Association, all rights reserved.

**CMBS Delinquencies - Monthly**

See A3-Appendix for detailed data on delinquencies by vintage year and property type.

Period	ALL 30+	60+	Period	ALL 30+	60+	Period	ALL 30+	60+	Period	ALL 30+	60+	Period	ALL 30+	60+
1999			2001			2003			2005			2007		
Jan	0.36%	0.21%	Jan	0.91%	0.71%	Jan	1.67%	1.35%	Jan	1.34%	1.15%	Jan	0.36%	0.29%
Feb	0.45%	0.25%	Feb	0.99%	0.76%	Feb	1.76%	1.39%	Feb	1.29%	1.13%	Feb	0.34%	0.26%
Mar	0.38%	0.24%	Mar	1.02%	0.73%	Mar	1.78%	1.44%	Mar	1.21%	1.08%	Mar	0.29%	0.24%
Apr	0.35%	0.22%	Apr	0.98%	0.79%	Apr	1.80%	1.46%	Apr	1.17%	1.01%	Apr	0.30%	0.23%
May	0.45%	0.22%	May	1.01%	0.78%	May	1.81%	1.51%	May	1.08%	0.93%	May	0.32%	0.23%
Jun	0.48%	0.32%	Jun	0.95%	0.74%	Jun	1.85%	1.60%	Jun	1.07%	0.93%	Jun	0.31%	0.24%
Jul	0.54%	0.36%	Jul	0.99%	0.83%	Jul	1.87%	1.57%	Jul	1.00%	0.87%	Jul	0.32%	0.23%
Aug	0.54%	0.37%	Aug	1.02%	0.81%	Aug	1.86%	1.60%	Aug	0.95%	0.81%	Aug	0.34%	0.23%
Sep	0.54%	0.39%	Sep	1.13%	0.93%	Sep	1.90%	1.64%	Sep	0.91%	0.77%	Sep	0.33%	0.23%
Oct	0.52%	0.39%	Oct	1.18%	0.93%	Oct	2.03%	1.65%	Oct	1.06%	0.71%	Oct	0.40%	0.22%
Nov	0.58%	0.38%	Nov	1.40%	0.96%	Nov	2.01%	1.67%	Nov	0.98%	0.71%	Nov	0.34%	0.27%
Dec	0.58%	0.36%	Dec	1.45%	1.12%	Dec	2.02%	1.71%	Dec	0.84%	0.65%	Dec	0.40%	0.28%
2000			2002			2004			2006			2008		
Jan	0.64%	0.39%	Jan	1.57%	1.21%	Jan	2.03%	1.66%	Jan	0.72%	0.56%	Jan	0.40%	0.30%
Feb	0.67%	0.42%	Feb	1.60%	1.23%	Feb	2.02%	1.66%	Feb	0.67%	0.54%	Feb	0.41%	0.30%
Mar	0.73%	0.49%	Mar	1.66%	1.35%	Mar	1.96%	1.65%	Mar	0.61%	0.49%	Mar	0.46%	0.33%
Apr	0.71%	0.52%	Apr	1.66%	1.39%	Apr	1.79%	1.53%	Apr	0.59%	0.49%	Apr	0.48%	0.35%
May	0.75%	0.54%	May	1.66%	1.43%	May	1.77%	1.56%	May	0.58%	0.49%	May	0.50%	0.39%
Jun	0.70%	0.55%	Jun	1.71%	1.45%	Jun	1.73%	1.51%	Jun	0.53%	0.45%	Jun	0.51%	0.38%
Jul	0.73%	0.53%	Jul	1.71%	1.43%	Jul	1.58%	1.42%	Jul	0.55%	0.43%	Jul	0.53%	0.39%
Aug	0.69%	0.56%	Aug	1.71%	1.38%	Aug	1.50%	1.30%	Aug	0.48%	0.40%	Aug	0.53%	0.41%
Sep	0.77%	0.56%	Sep	1.68%	1.37%	Sep	1.46%	1.24%	Sep	0.54%	0.39%	Sep	0.62%	0.45%
Oct	0.68%	0.57%	Oct	1.62%	1.34%	Oct	1.41%	1.22%	Oct	0.44%	0.36%	Oct	0.75%	0.50%
Nov	0.67%	0.55%	Nov	1.66%	1.37%	Nov	1.43%	1.21%	Nov	0.40%	0.33%	Nov	1.00%	0.63%
Dec	0.85%	0.59%	Dec	1.69%	1.38%	Dec	1.35%	1.15%	Dec	0.36%	0.29%	Dec	1.18%	0.83%
2009														
Jan	1.49%	1.08%												
Feb	1.67%	1.22%												
Mar	1.89%	1.40%												
Apr	2.42%	1.64%												
May	2.73%	2.03%												
Jun	4.66%	2.39%												
Jul	3.66%	2.88%												
Aug	3.92%	2.98%												
Sep	4.27%	3.40%												
Oct	4.67%	3.64%												
Nov	5.02%	4.02%												
Dec	5.61%	4.49%												

Source:Trepp LLC, CMSA.Data from past periods may differ from previous reports due to updated information. Delinquency rates are fixed-rate, conduit CMBS transactions.

All 30+ include loans 30, 60, 90-days delinquent, performing and non-performing matured loans, loans in foreclosure and REO. 60+ excludes 30-day delinquencies. See CMBS World® for additional delinquency statistics.



Exhibit 6

**CMBS Delinquencies
Quarterly by Property Type**

Updated January 29, 2010

See A2-Appendix for detailed data on delinquencies by vintage year and property type.

Period	CMBS Balance (\$'000,000)	Delinquencies by Property Type							
		ALL 30+	60+	Chg 60+	Lodging	M-Family	Office	Retail	Industrial
1Q00	124,100	0.73%	0.49%	0.13%	1.87%	0.32%	0.39%	0.88%	0.71%
2Q00	131,478	0.70%	0.55%	0.06%	2.10%	0.30%	0.29%	0.78%	0.64%
3Q00	139,806	0.77%	0.56%	0.00%	1.63%	0.35%	0.30%	0.61%	0.79%
4Q00	151,668	0.85%	0.59%	0.04%	2.13%	0.46%	0.23%	0.50%	0.71%
1Q01	153,708	1.02%	0.73%	0.14%	2.59%	0.56%	0.31%	0.71%	0.76%
2Q01	161,169	0.95%	0.74%	0.02%	2.25%	0.38%	0.38%	0.70%	0.70%
3Q01	170,132	1.13%	0.93%	0.18%	2.89%	0.51%	0.31%	0.80%	0.62%
4Q01	182,031	1.45%	1.12%	0.20%	6.63%	0.79%	0.43%	1.03%	0.76%
1Q02	185,335	1.66%	1.35%	0.22%	7.97%	0.76%	0.59%	1.13%	1.35%
2Q02	179,936	1.71%	1.45%	0.10%	7.37%	0.72%	0.72%	1.39%	1.54%
3Q02	188,197	1.68%	1.37%	-0.08%	6.78%	1.02%	0.59%	1.45%	1.34%
4Q02	194,060	1.69%	1.38%	0.00%	8.04%	0.92%	0.56%	1.34%	1.44%
1Q03	199,030	1.78%	1.44%	0.07%	9.35%	1.03%	0.73%	1.24%	1.50%
2Q03	212,377	1.85%	1.60%	0.16%	9.53%	1.14%	0.87%	1.23%	2.04%
3Q03	224,411	1.90%	1.64%	0.03%	8.39%	1.36%	1.18%	1.22%	2.01%
4Q03	237,391	2.02%	1.71%	0.07%	8.51%	1.86%	1.41%	1.26%	2.11%
1Q04	248,457	1.96%	1.65%	-0.05%	8.27%	1.94%	1.61%	1.28%	1.76%
2Q04	271,184	1.73%	1.51%	-0.14%	7.22%	1.91%	1.32%	1.02%	2.18%
3Q04	289,207	1.46%	1.24%	-0.27%	4.89%	1.89%	1.19%	0.84%	2.02%
4Q04	307,732	1.35%	1.15%	-0.09%	4.26%	2.14%	0.97%	0.65%	2.09%
1Q05	319,213	1.21%	1.08%	-0.07%	3.28%	2.12%	0.91%	0.51%	1.77%
2Q05	344,235	1.07%	0.93%	-0.15%	2.75%	1.97%	0.69%	0.47%	1.38%
3Q05	386,758	0.91%	0.77%	-0.16%	2.35%	1.70%	0.62%	0.38%	1.43%
4Q05	416,109	0.84%	0.65%	-0.12%	2.00%	1.58%	0.64%	0.39%	1.49%
1Q06	475,660	0.61%	0.49%	-0.16%	1.44%	1.31%	0.50%	0.35%	1.36%
2Q06	502,673	0.53%	0.45%	-0.04%	1.13%	1.15%	0.44%	0.24%	0.97%
3Q06	535,909	0.54%	0.39%	-0.06%	1.14%	0.97%	0.38%	0.20%	0.84%
4Q06	591,922	0.36%	0.29%	-0.10%	0.70%	0.89%	0.30%	0.19%	1.08%
1Q07	637,055	0.29%	0.24%	-0.05%	0.56%	0.78%	0.27%	0.15%	0.67%
2Q07	633,240	0.31%	0.24%	0.00%	0.63%	0.78%	0.22%	0.17%	0.31%
3Q07	686,868	0.33%	0.23%	-0.01%	0.60%	0.79%	0.19%	0.26%	0.35%
4Q07	707,833	0.40%	0.28%	0.05%	0.29%	1.24%	0.20%	0.25%	0.31%
1Q08	706,032	0.46%	0.33%	0.05%	0.37%	1.57%	0.18%	0.29%	0.62%
2Q08	693,756	0.51%	0.38%	0.05%	0.32%	1.62%	0.30%	0.35%	0.60%
3Q08	685,823	0.62%	0.45%	0.07%	0.48%	1.82%	0.41%	0.48%	0.70%
4Q08	668,732	1.18%	0.83%	0.38%	0.95%	2.77%	0.67%	1.14%	1.16%
1Q09	661,767	1.89%	1.40%	0.57%	1.37%	3.75%	1.39%	2.10%	1.72%
2Q09	653,041	4.66%	2.39%	0.99%	4.23%	5.35%	1.92%	6.05%	2.46%
3Q09	642,016	4.27%	3.40%	1.01%	6.08%	6.34%	2.66%	4.10%	3.14%
4Q09	639,535	5.61%	4.49%	1.09%	9.59%	8.24%	3.31%	5.14%	4.23%

Source: Trepp LLC, CMSA. Data from past periods may differ from previous reports due to updated information.

Property Type delinquencies are based on 30+ days.

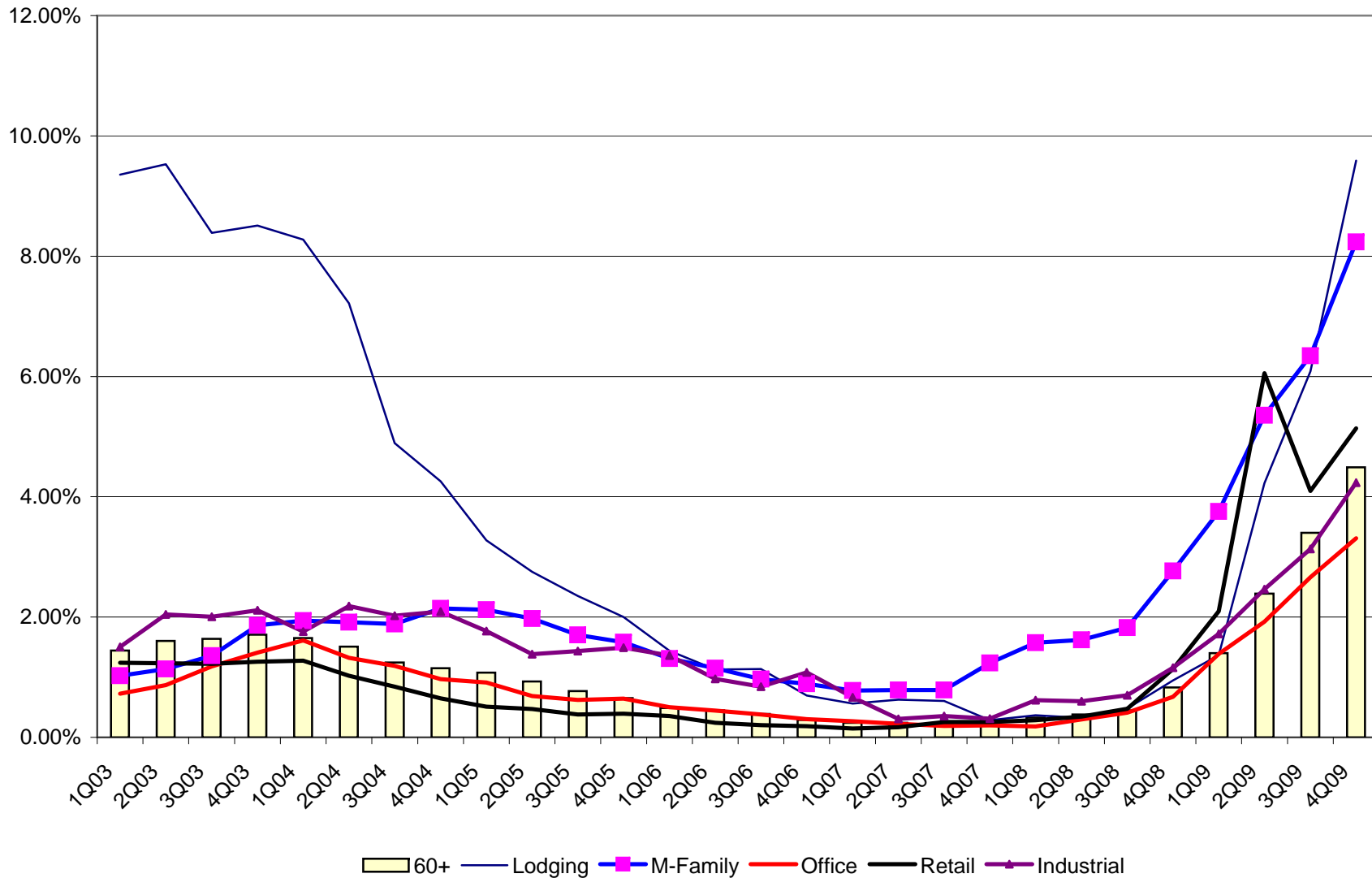
Delinquency rates are for fixed-rate, conduit CMBS transactions. All 30+ include loans 30, 60, 90-days delinquent, performing and non-performing matured loans, loans in foreclosure and REO. 60+ excludes 30-day delinquencies. See CMBS World® for additional delinquency statistics.



Exhibit 7
CMSA Delinquencies by Property Type

Updated January 29, 2010

See A2-Appendix for detailed data on delinquencies by vintage year and property type.



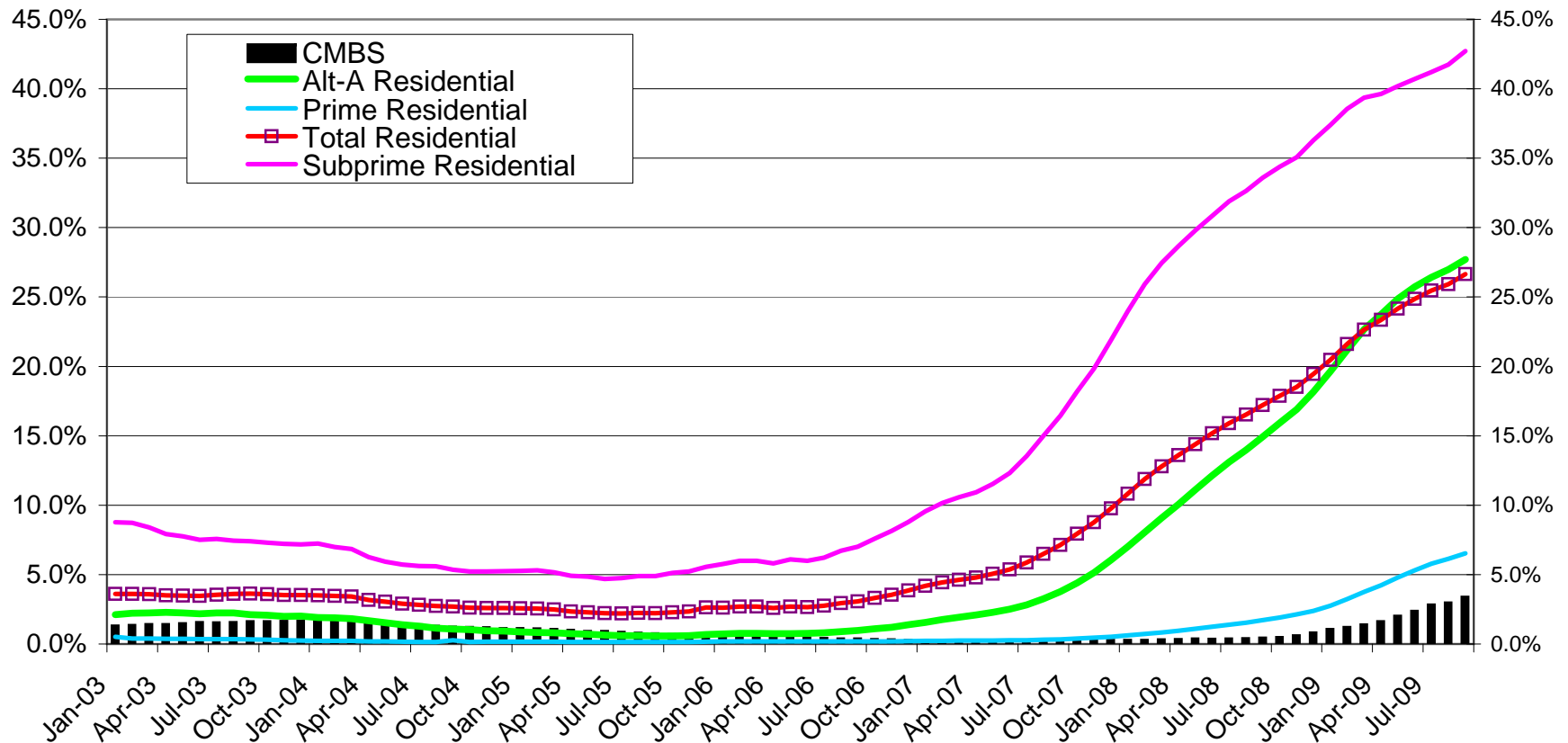
Source: Trepp LLC

See Exhibit 6 for underlying data. Property type delinquencies are based 30+ days.

© 2008 CMSA - Commercial Mortgage Securities Association, all rights reserved.



Securitized Mortgages: Residential vs. Commercial (60+ day) by dollar securitized

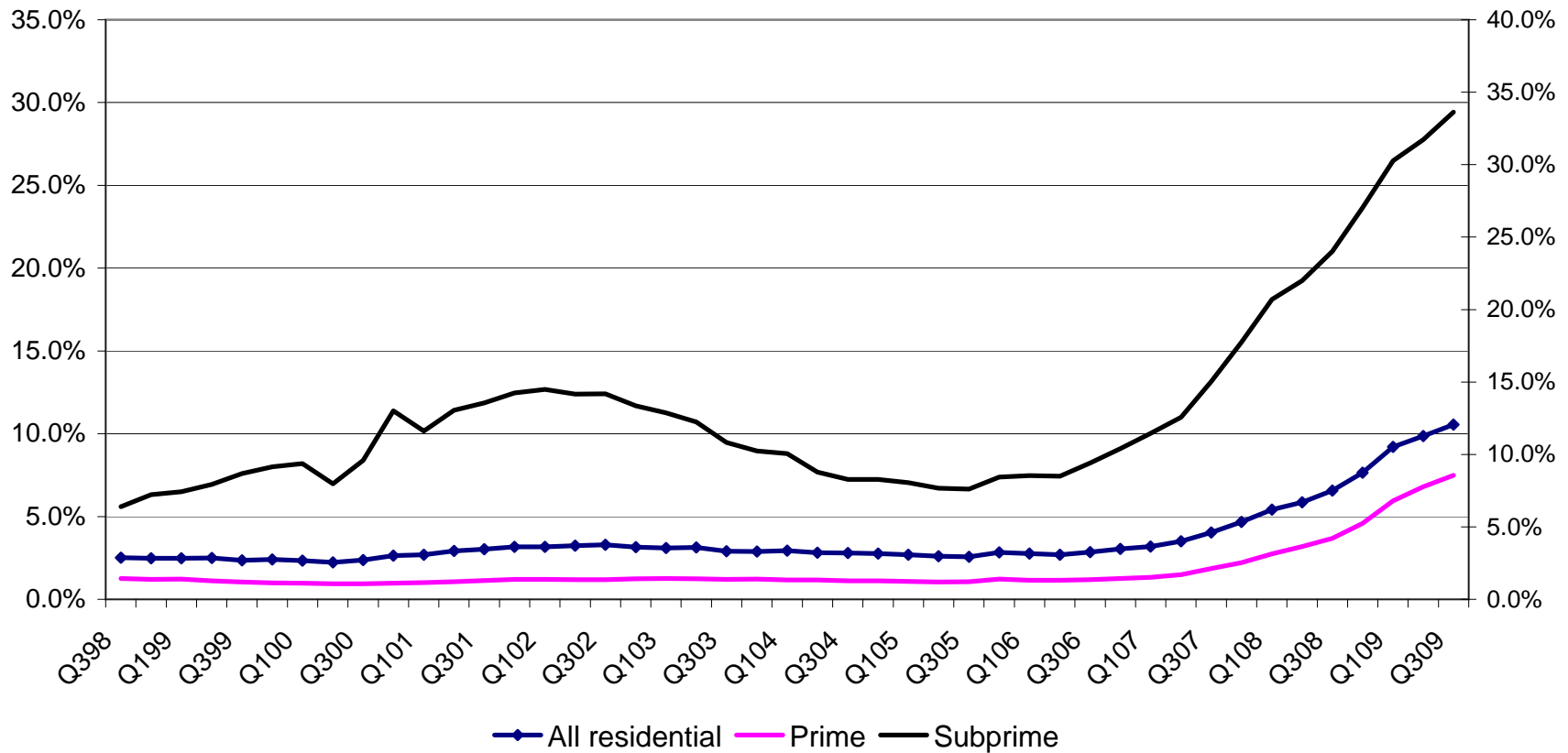


Source: CMSA, JPMorgan, LoanPerformance, Trepp, Inc.

Delinquency figures are dollar based (not loan count) and includes loans that are 60+, 90-day delinquent in addition to loans in process of foreclosure and REO. Residential includes loans on residential investment properties, manufactured housing and a limited amount of multifamily holdings. CMBS are commercial mortgages, all properties types, securitized as commercial mortgage backed securities. Historical data subject to quarterly revisions.



Residential Delinquencies by loan number



Source: National Delinquency Survey, Mortgage Bankers Association, CMSA.

Delinquency figures are based on loan counts (not dollar balances) and includes loans that are 60+, 90-day delinquent in addition to loans in process of foreclosure. Figures are seasonally adjusted by MBA using Census Bureau's X-12-ARIMA seasonally adjusted program. REO is not included. For the first quarter 2008, National Delinquency Survey data covered about 45.0 million loans 1-4 unit residential properties.



Exhibit 10

CMBS by Regions - Detail

As of August 2008

(\$ millions)

Updated January 29, 2010

By US State	Current Balance	Allocation	By US State	Current Balance	Allocation
Alabama	4,730	0.8%	Montana	218	0.0%
Alaska	667	0.1%	Nebraska	1,472	0.2%
Arizona	17,519	2.8%	Nevada	13,635	2.2%
Arkansas	1,897	0.3%	New Hampshire	1,663	0.3%
California	104,288	16.9%	New Jersey	19,609	3.2%
Colorado	11,023	1.8%	New Mexico	1,935	0.3%
Connecticut	9,818	1.6%	New York	95,538	15.5%
Delaware	2,475	0.4%	North Carolina	15,666	2.5%
District of Columbia	9,518	1.5%	North Dakota	443	0.1%
Florida	42,149	6.8%	Ohio	14,346	2.3%
Georgia	19,743	3.2%	Oklahoma	2,772	0.4%
Hawaii	5,668	0.9%	Oregon	5,104	0.8%
Idaho	1,077	0.2%	Pennsylvania	19,778	3.2%
Illinois	24,609	4.0%	Rhode Island	1,197	0.2%
Indiana	7,701	1.2%	South Carolina	5,791	0.9%
Iowa	1,766	0.3%	South Dakota	496	0.1%
Kansas	2,956	0.5%	Tennessee	7,214	1.2%
Kentucky	3,613	0.6%	Texas	49,526	8.0%
Louisiana	4,786	0.8%	Utah	3,818	0.6%
Maine	1,050	0.2%	Vermont	566	0.1%
Maryland	18,440	3.0%	Virginia	116	0.0%
Massachusetts	15,883	2.6%	Washington	11,818	1.9%
Michigan	12,635	2.0%	West Virginia	852	0.1%
Minnesota	6,621	1.1%	Wisconsin	4,969	0.8%
Mississippi	1,508	0.2%	Wyoming	193	0.0%
Missouri	6,080	1.0%			
Total U.S. by State and Washington, D.C.				616,954	100.0%
Other				1,856	
Multi-region				80,429	
Unknown				4,481	
Total				703,719	

Source: Trepp LLC, CMSA. Due to revisions beginning in July 2008, data allocation may differ from earlier published reports.

**CMBS by Deal Type**

(millions of dollars)

	<u>Original Balance</u>	<u>Allocation</u>	<u>Current Balance</u>	<u>Allocation</u>
Agency CMBS	845,077	87.6%	667,631	91.6%
Agency Pool	159	0.0%	3	0.0%
Conduit	79,654	8.3%	35,178	4.8%
Credit Tenant	6,430	0.7%	3,841	0.5%
FHA	8,223	0.9%	4,700	0.6%
Health Care	7,122	0.7%	1,063	0.1%
Large Loan	18,396	1.9%	16,547	2.3%
Seasoned	0	0.0%	0	0.0%
Small Loan	0	0.0%	0	0.0%
Single Asset / Borrower	0	0.0%	0	0.0%
Total	965,061	100.0%	728,963	100.0%

CMBS by Property Type

(millions of dollars)

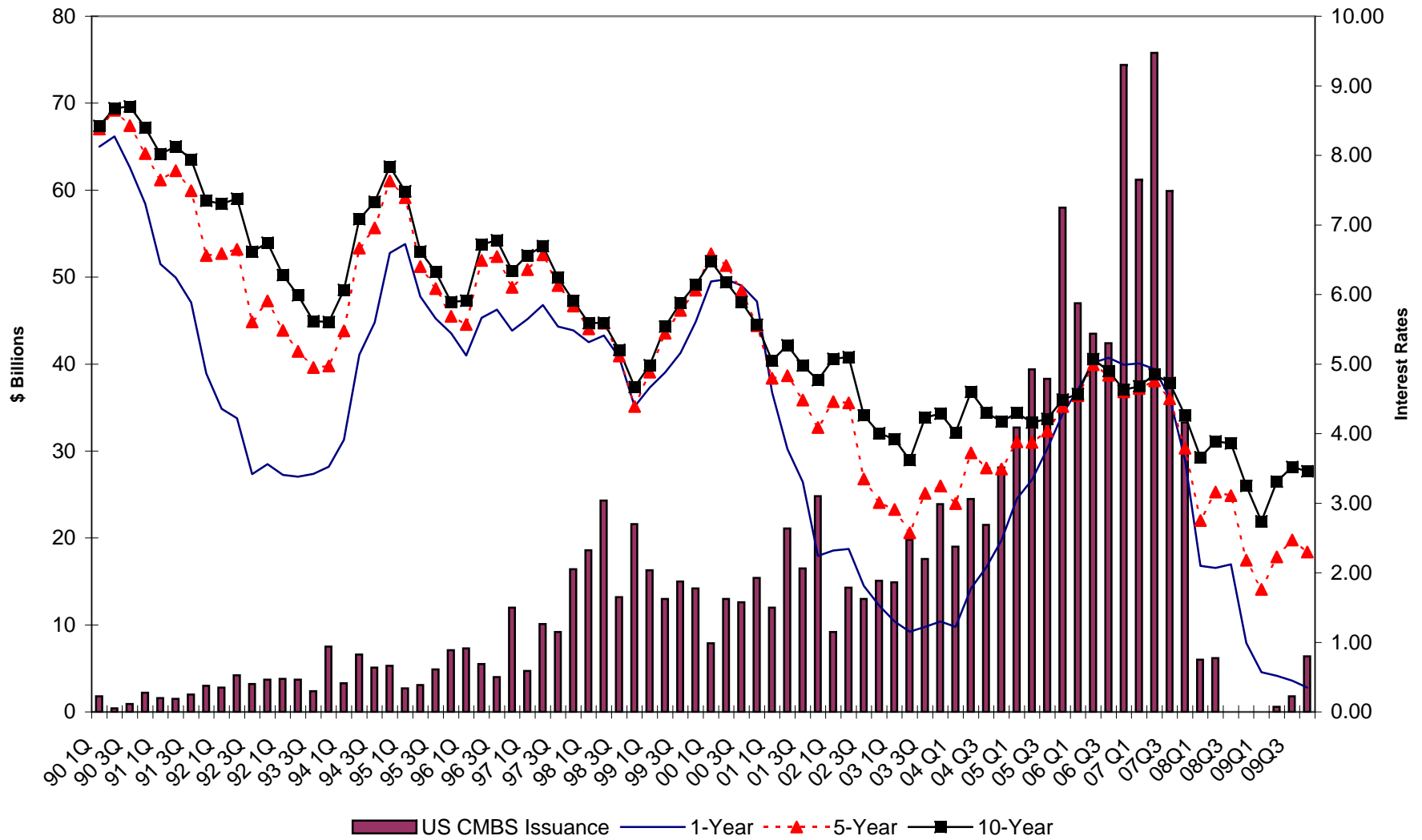
	<u>Original Balance</u>	<u>Allocation</u>	<u>Current Balance</u>	<u>Allocation</u>
Co-op Housing	3,319	0.3%	2,736	0.4%
Health Care	7,368	0.8%	3,747	0.5%
Industrial	48,404	5.0%	35,651	4.9%
Lodging	101,367	10.5%	73,058	10.0%
Mixed Use	44,505	4.6%	36,103	5.0%
Mobile Home	17,166	1.8%	12,120	1.7%
Multi-Family	166,833	17.3%	111,996	15.4%
Office	275,395	28.5%	219,516	30.1%
Other	10,176	1.1%	7,595	1.0%
Retail	272,834	28.3%	213,451	29.3%
Self Storage	16,813	1.7%	12,931	1.8%
Warehouse	853	0.1%	60	0.0%
Unknown	28	0.0%	0	0.0%
Total	965,061	100.0%	728,963	100.0%

Source: Trepp LLC, CMSA. Due to revisions beginning in July 2008, data allocation may differ from earlier published reports.



Exhibit 12
Interest Rates and CMBS Issuance
Quarterly

Updated January 12, 2010

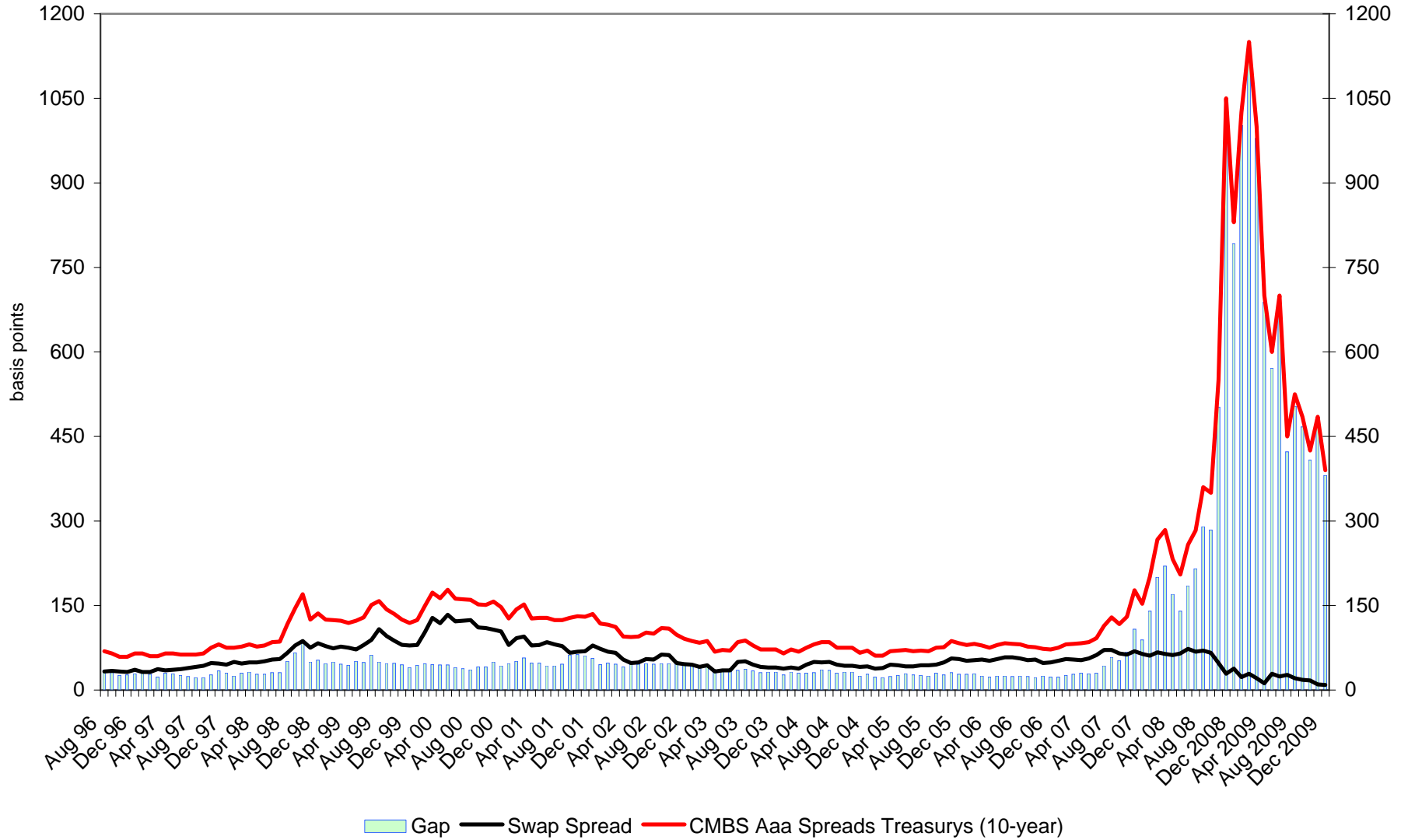


Source: CMSA, Commercial Mortgage Alert and Federal Reserve
© 2008 CMSA - Commercial Mortgage Securities Association, all rights reserved.



Exhibit 13
CMBS Spreads and Swap Spreads
Monthly

Updated January 29, 2010



Source: Morgan Stanley. Generic AAA spreads from August 1996 to December 2004; Super Senior AAA from January 2005 to present.

© 2008 CMSA - Commercial Mortgage Securities Association, all rights reserved.

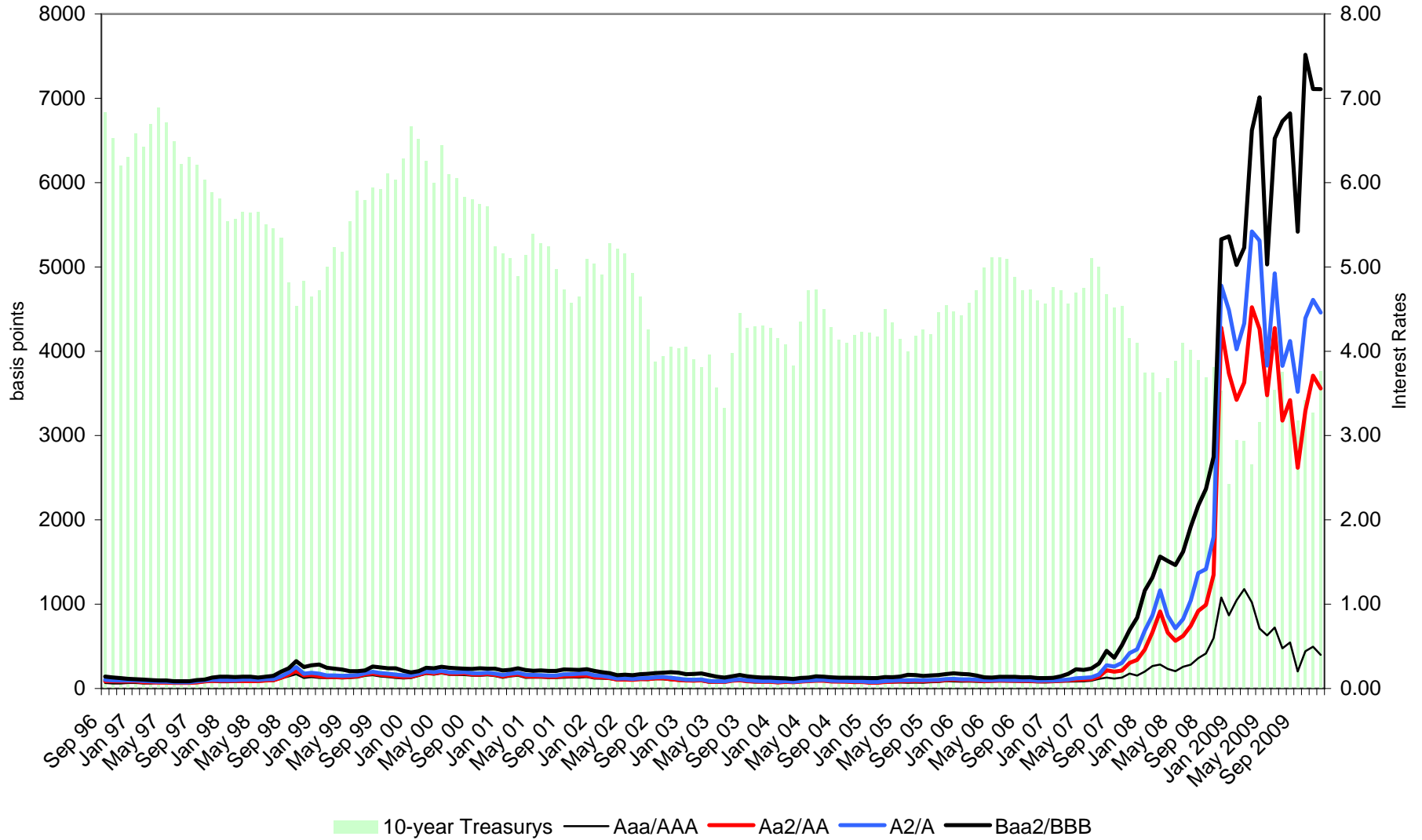


Exhibit 14

CMBS Spreads Over 10-Year Treasuries: Investment Grade

Monthly

Updated January 29, 2010



Source: Morgan Stanley. Generic AAA spreads from August 1996 to December 2004; Super Senior AAA from January 2005 to present.

© 2008 CMSA - Commercial Mortgage Securities Association, all rights reserved.



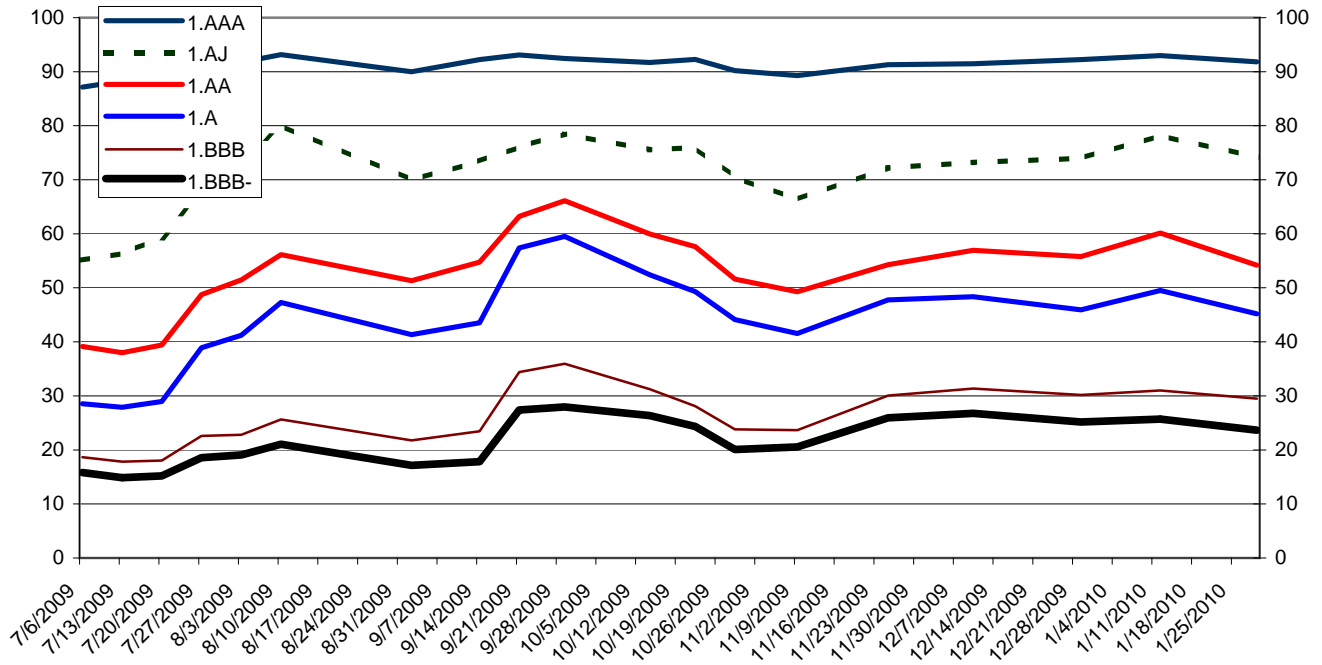
Exhibit 15

CMBX Prices Weekly - Friday Close

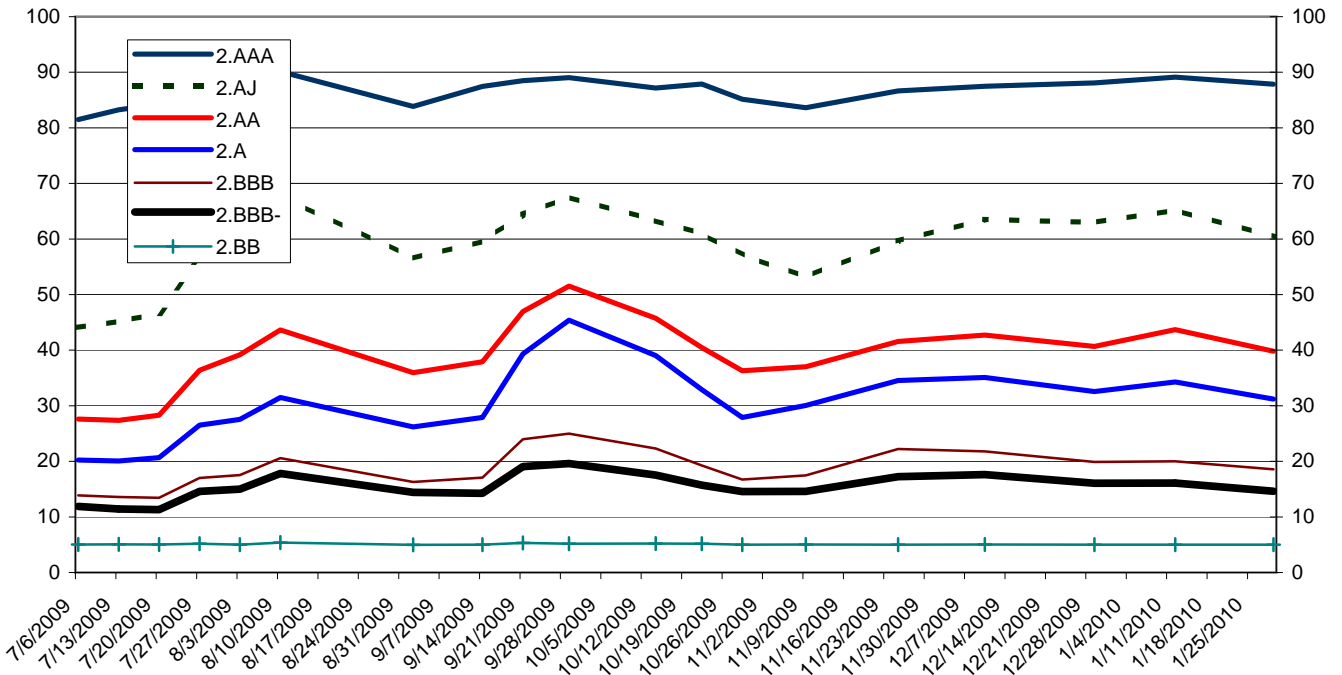
Updated January 29, 2010

Spreads through 4/17/09 are in appendix A-4

CMBX.1 Spreads



CMBX.2 Spreads



Source: Markit, CDS IndexCo. AJ tranche added on January 4, 2008.

© 2008 CMSA - Commercial Mortgage Securities Association, all rights reserved.



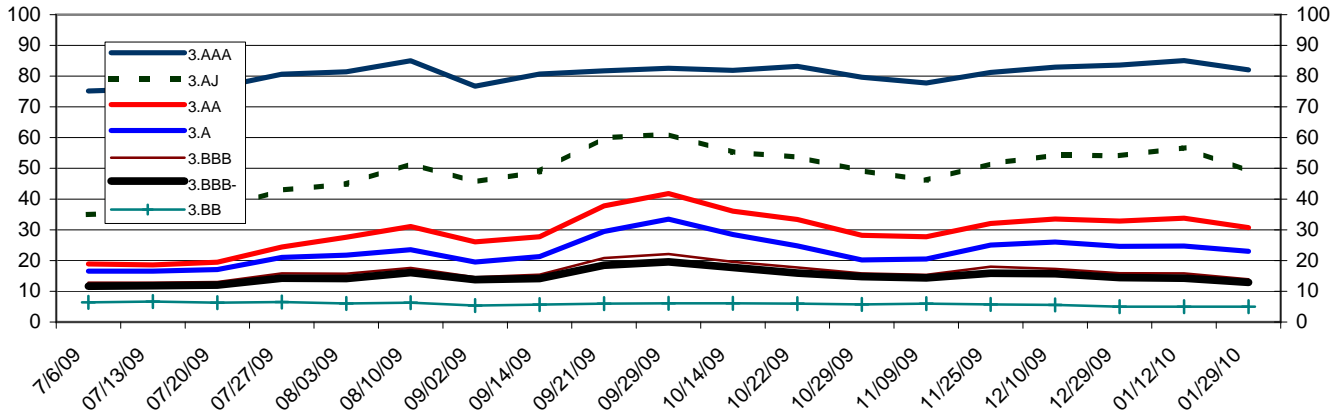
Exhibit 16

CMBX Prices Weekly - Friday Close

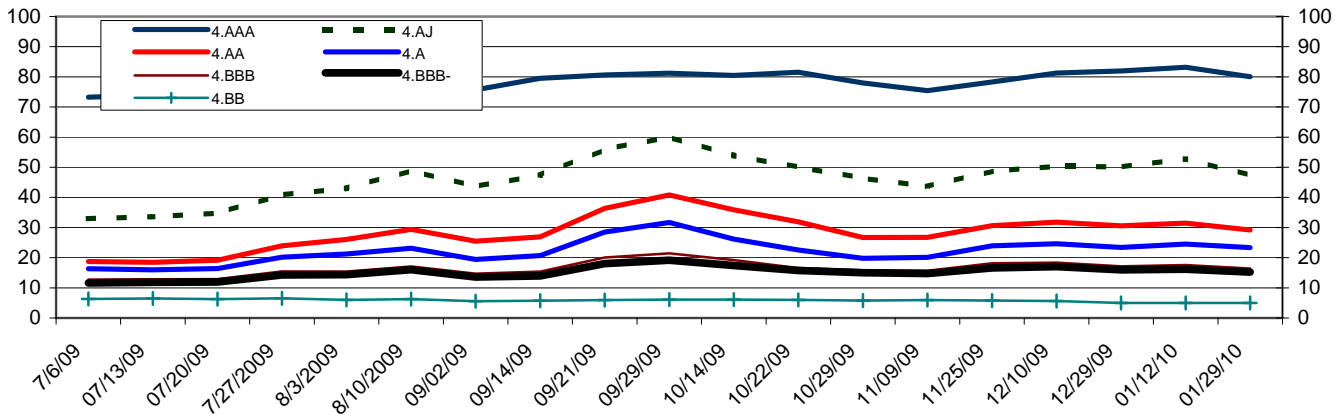
Updated January 29, 2010

Spreads through 4/17/09 are in appendix A-4

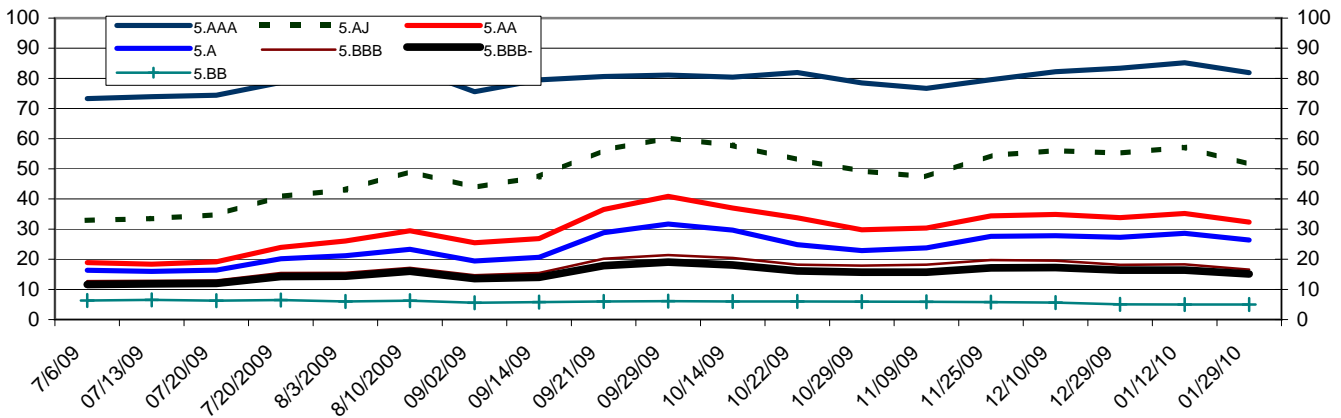
CMBX.3 Spreads



CMBX.4 Spreads



CMBX.5 Spreads



Source: Markit, CDS IndexCo. AJ tranche added on January 4, 2008.

© 2008 CMSA - Commercial Mortgage Securities Association, all rights reserved.



This page was intentionally left blank.



Exhibit 18

Top CMBS & CDO Portfolios Among Insurers

As of yearend 2008

<u>Ranking</u>	<u>Company Name</u>	<u>CMBS (\$Mil.)</u>	<u>CDOs (\$Mil.)</u>	<u>12/08 Total (\$Mil.)</u>	<u>12/07 Total (\$Mil.)</u>	<u>07-'08 Change (%)</u>	<u>12/08 Total As % of Assets</u>
1	TIAA-CREF	20,593	1,155	21,748	23,600	-7.8	12.0
2	MetLife	14,762	168	14,930	17,913	-16.7	5.2
3	AIG	13,463	583	14,046	23,224	-39.5	8.3
4	New York Life	10,861	78	10,939	9,369	16.8	7.1
5	Prudential Financial	10,652	0	10,652	6,581	61.9	6.0
6	ING	10,057	0	10,057	10,489	-4.1	11.7
7	Hartford Life	8,290	1,388	9,678	10,472	-7.6	14.2
8	Manulife Financial	5,752	0	5,752	6,000	-4.1	3.1
9	Principal Life	5,434	0	5,434	5,158	5.4	8.8
10	Genworth	4,842	0	4,842	5,148	-5.9	8.7
11	Massachusetts Mutual	3,817	37	3,854	3,741	3.0	4.4
12	Northwestern Mutual	2,871	699	3,570	4,739	-24.7	2.6
13	Jackson National	3,222	20	3,242	3,077	5.4	6.7
14	Great West Lifeco	2,965	0	2,965	2,597	14.2	2.6
15	AXA Financial	2,888	0	2,888	3,038	-4.9	5.5
16	Lincoln National	2,529	45	2,574	2,753	-6.5	3.7
17	Ameriprise/Riversource	2,420	0	2,420	2,708	-10.6	8.3
18	SunLife Financial	1,889	0	1,889	2,513	-24.8	1.8
19	Thrivent Financial	1,798	0	1,798	1,889	-4.8	4.2
20	OM Financial	1,539	163	1,702	2,007	-15.2	10.1
21	Western & Southern	1,499	0	1,499	2,280	-34.3	6.0
22	Guardian Life	1,195	0	1,195	N/A	N/A	3.7
23	Pacific Life	1,192	0	1,192	1,370	-13.0	2.8
24	Protective Life	1,164	0	1,164	1,330	-12.5	4.7
25	Minnesota Life	976	1	977	1,152	-15.2	9.9
	Allstate	N/A	N/A	N/A	8,076	N/A	N/A
	Aegon	N/A	N/A	N/A	6,954	N/A	N/A

Source: Commercial Mortgage Alert (CMAAlert.com)



Holders of Commercial & Multifamily Mortgage Loans
(\$ billions)

	Commercial Banks	CMBS Issuers	Life Companies	Savings Institutions	GSEs	Others	Total	CMBS Issuers ex. GSE Pools
1970	26.6	0.1	42.0	41.0	0.9	36.0	146.6	
1980	95.1	6.0	100.2	115.8	6.7	78.6	402.4	
1990	401.8	41.6	244.1	201.0	13.2	207.3	1,109.0	12.9
1991	410.3	44.2	238.8	166.6	14.2	217.9	1,092.0	18.1
1992	401.9	51.6	221.6	138.0	15.8	206.6	1,035.5	27.8
1993	394.7	62.5	205.9	128.2	17.5	200.0	1,008.8	40.0
1994	400.2	70.0	197.6	118.2	18.4	192.4	996.8	47.6
1995	419.8	81.3	194.6	114.1	18.5	185.7	1,014.0	54.4
1996	443.0	102.8	191.1	114.3	17.7	188.3	1,057.2	70.3
1997	472.8	132.4	189.2	110.8	16.2	211.4	1,132.8	94.6
1998	510.9	205.2	195.5	110.0	16.2	217.5	1,255.3	156.9
1999	584.0	255.8	211.8	119.4	20.5	246.7	1,438.2	198.3
2000	660.4	298.5	217.5	128.3	25.0	245.6	1,575.3	232.5
2001	730.5	358.4	224.0	137.1	33.2	244.7	1,727.9	276.8
2002	798.2	401.6	231.8	149.3	41.7	243.9	1,866.5	307.1
2003	867.1	472.1	242.5	167.1	68.2	256.2	2,073.2	357.6
2004	979.4	527.4	254.6	182.6	82.5	271.1	2,297.6	410.0
2005	1,128.1	643.3	266.7	198.4	93.0	292.3	2,621.8	522.0
2006	1,280.8	752.5	281.5	205.4	105.4	324.7	2,950.3	629.0
2007 Q1	1,292.0	800.5	284.4	205.0	111.3	323.5	3,016.7	674.6
Q2	1,326.2	848.7	290.2	206.8	119.4	329.9	3,121.2	720.1
Q3	1,356.4	902.9	295.3	212.5	126.2	339.2	3,232.5	770.3
Q4 & YE	1,396.9	919.1	304.0	215.4	147.7	343.9	3,327.0	779.9
2008 Q1	1,427.7	914.6	308.8	226.1	157.7	354.4	3,389.3	771.9
Q2	1,463.0	907.7	313.1	230.2	167.7	358.8	3,440.5	761.8
Q3	1,521.4	906.3	315.3	191.2	179.4	329.4	3,443.0	757.8
Q4 & YE	1,548.1	895.6	315.5	192.9	189.4	357.1	3,498.6	746.4
2009 Q1	1,555.6	890.8	316.4	193.9	191.3	332.8	3,480.8	736.4
Q2	1,552.4	871.4	312.6	194.8	194.6	341.3	3,467.1	714.2
Q3	1,532.0	870.7	310.1	190.4	197.4	334.0	3,434.6	708.5
Annual Change								
1991	2.1%	6.3%	-2.2%	-17.1%	7.6%	5.1%	-1.5%	40.3%
1992	-2.0%	16.7%	-7.2%	-17.2%	11.3%	-5.2%	-5.2%	53.6%
1993	-1.8%	21.1%	-7.1%	-7.1%	10.8%	-3.2%	-2.6%	43.9%
1994	1.4%	12.0%	-4.0%	-7.8%	5.1%	-3.8%	-1.2%	19.0%
1995	4.9%	16.1%	-1.5%	-3.5%	0.5%	-3.5%	1.7%	14.3%
1996	5.5%	26.4%	-1.8%	0.2%	-4.3%	1.4%	4.3%	29.2%
1997	6.7%	28.8%	-1.0%	-3.1%	-8.5%	12.3%	7.2%	34.6%
1998	8.1%	55.0%	3.3%	-0.7%	0.0%	2.9%	10.8%	65.9%
1999	14.3%	24.7%	8.3%	8.5%	26.5%	13.4%	14.6%	26.4%
2000	13.1%	16.7%	2.7%	7.5%	22.0%	-0.4%	9.5%	17.2%
2001	10.6%	20.1%	3.0%	6.9%	32.8%	-0.4%	9.7%	19.1%
2002	9.3%	12.1%	3.5%	8.9%	25.6%	-0.3%	8.0%	10.9%
2003	8.6%	17.6%	4.6%	11.9%	63.5%	5.0%	11.1%	16.4%
2004	13.0%	11.7%	5.0%	9.3%	21.0%	5.8%	10.8%	14.7%
2005	15.2%	22.0%	4.8%	8.7%	12.7%	7.8%	14.1%	27.3%
2006	13.5%	17.0%	5.5%	3.5%	13.3%	11.1%	12.5%	20.5%
2007	9.1%	22.1%	8.0%	4.9%	40.1%	5.9%	12.8%	24.0%
2008	10.8%	-2.6%	3.8%	-10.4%	28.2%	3.8%	5.2%	-4.3%

Source: CMSA, Flow of Funds Accounts of the United States, Federal Reserve, Release Z.1

"Other" includes household sector, nonfinancial corporate business, nonfarm noncorporate business, federal, state and local governments, P&C insurance companies, pension funds, finance and mortgages companies and REITs.

© 2008 CMSA - Commercial Mortgage Securities Association, all rights reserved.



Holders of Commercial & Multifamily Mortgage Loans

Percentage Distribution

	Total (\$ Billions)	Commercial Banks	CMBS Issuers	Life Companies	Savings Institutions	GSEs	Others
1970	146.6	18.1%	0.1%	28.6%	28.0%	0.6%	24.6%
1980	402.4	23.6%	1.5%	24.9%	28.8%	1.7%	19.5%
1990	1,109.0	36.2%	3.8%	22.0%	18.1%	1.2%	18.7%
1991	1,092.0	37.6%	4.0%	21.9%	15.3%	1.3%	20.0%
1992	1,035.5	38.8%	5.0%	21.4%	13.3%	1.5%	20.0%
1993	1,008.8	39.1%	6.2%	20.4%	12.7%	1.7%	19.8%
1994	996.8	40.1%	7.0%	19.8%	11.9%	1.8%	19.3%
1995	1,014.0	41.4%	8.0%	19.2%	11.3%	1.8%	18.3%
1996	1,057.2	41.9%	9.7%	18.1%	10.8%	1.7%	17.8%
1997	1,132.8	41.7%	11.7%	16.7%	9.8%	1.4%	18.7%
1998	1,255.3	40.7%	16.3%	15.6%	8.8%	1.3%	17.3%
1999	1,438.2	40.6%	17.8%	14.7%	8.3%	1.4%	17.2%
2000	1,575.3	41.9%	18.9%	13.8%	8.1%	1.6%	15.6%
2001	1,727.9	42.3%	20.7%	13.0%	7.9%	1.9%	14.2%
2002	1,866.5	42.8%	21.5%	12.4%	8.0%	2.2%	13.1%
2003	2,073.2	41.8%	22.8%	11.7%	8.1%	3.3%	12.4%
2004	2,297.6	42.6%	23.0%	11.1%	7.9%	3.6%	11.8%
2005 Q1	2,348.0	43.1%	23.6%	11.0%	7.8%	2.9%	11.7%
Q2	2,428.7	43.2%	24.0%	10.7%	7.8%	2.9%	11.5%
Q3	2,515.5	43.6%	24.0%	10.4%	7.7%	2.9%	11.3%
Q4 & YE	2,621.8	43.0%	24.5%	10.2%	7.6%	3.5%	11.1%
2006 Q1	2,703.1	43.2%	24.8%	10.0%	7.5%	3.6%	11.0%
Q2	2,777.7	43.4%	24.8%	9.9%	7.5%	3.6%	10.9%
Q3	2,856.0	43.4%	25.0%	9.8%	7.5%	3.5%	10.8%
Q4 & YE	2,950.3	43.4%	25.5%	9.5%	7.0%	3.6%	11.0%
2007 Q1	3,016.7	42.8%	26.5%	9.4%	6.8%	3.7%	10.7%
Q2	3,121.2	42.5%	27.2%	9.3%	6.6%	3.8%	10.6%
Q3	3,232.5	42.0%	27.9%	9.1%	6.6%	3.9%	10.5%
Q4 & YE	3,327.0	42.0%	27.6%	9.1%	6.5%	4.4%	10.3%
2008 Q1	3,389.3	42.1%	27.0%	9.1%	6.7%	4.7%	10.5%
Q2	3,440.5	42.5%	26.4%	9.1%	6.7%	4.9%	10.4%
Q3	3,443.0	44.2%	26.3%	9.2%	5.6%	5.2%	9.6%
Q4 & YE	3,498.6	44.2%	25.6%	9.0%	5.5%	5.4%	10.2%
2009 Q1	3,480.8	44.7%	25.6%	9.1%	5.6%	5.5%	9.6%
Q2	3,467.1	44.8%	25.1%	9.0%	5.6%	5.6%	9.8%
Q3	3,434.6	44.6%	25.4%	9.0%	5.5%	5.7%	9.7%

Source: CMSA, Flow of Funds Accounts of the United States, Federal Reserve, Release Z.1

"Other" includes household sector, nonfinancial corporate business, nonfarm noncorporate business, federal, state and local governments, P&C insurance companies, pension funds, finance and mortgages companies and REITs.

© 2008 CMSA - Commercial Mortgage Securities Association, all rights reserved.



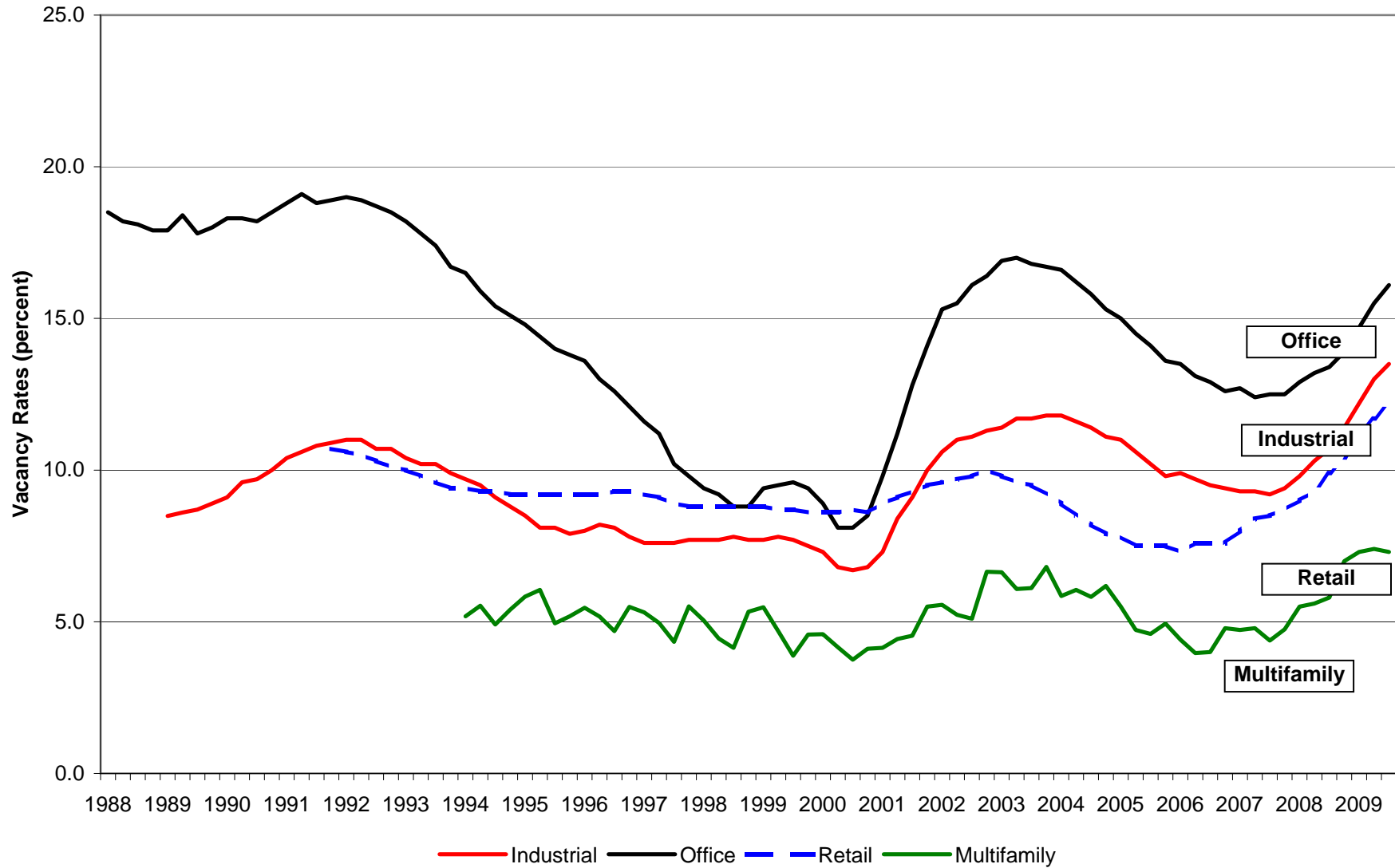
Mortgage Securitization Levels
Percentage Distribution

	1-4 Family (\$ billions)			Percent Securitized			
	Total	Agencies	ABS issuers	1-4 Family	Multifamily	Commercial	Total Commercial
1970	292.1	2.5	-	0.9%	0.2%	0.0%	0.1%
1980	957.9	107.1	-	11.2%	4.2%	0.0%	1.5%
1990	2,614.8	991.1	55.2	40.0%	10.3%	1.5%	3.8%
1991	2,783.1	1,130.4	98.2	44.1%	10.5%	1.8%	4.0%
1992	2,951.1	1,248.2	146.1	47.2%	11.2%	2.8%	5.0%
1993	3,112.8	1,334.3	174.4	48.5%	11.5%	4.3%	6.2%
1994	3,292.6	1,449.6	192.4	49.9%	12.0%	5.2%	7.0%
1995	3,451.2	1,543.4	193.8	50.3%	14.1%	5.7%	8.0%
1996	3,674.7	1,678.8	215.4	51.5%	16.9%	7.0%	9.7%
1997	3,909.9	1,788.1	253.8	52.2%	19.5%	8.9%	11.7%
1998	4,266.2	1,970.2	321.9	53.7%	24.5%	13.4%	16.3%
1999	4,691.5	2,234.7	353.7	55.2%	26.6%	14.7%	17.8%
2000	5,118.6	2,425.6	377.5	54.8%	28.1%	15.8%	18.9%
2001	5,680.9	2,748.5	463.2	56.5%	30.2%	17.4%	20.7%
2002	6,439.4	3,063.7	544.1	56.0%	31.6%	18.0%	21.5%
2003	7,232.5	3,211.2	666.0	53.6%	32.1%	19.3%	22.8%
2004	8,278.3	3,256.3	1,054.7	52.1%	30.8%	20.1%	23.0%
2005 Q1	8,437.5	3,420.8	1,113.1	53.7%	32.2%	20.5%	23.6%
Q2	8,736.1	3,440.8	1,256.2	53.8%	32.0%	21.1%	24.0%
Q3	9,077.0	3,487.8	1,435.3	54.2%	31.8%	21.3%	24.0%
Q4 & YE	9,383.8	3,419.7	1,613.1	53.6%	30.6%	22.4%	24.5%
2006 Q1	9,690.7	3,495.9	1,747.2	54.1%	30.5%	22.8%	24.8%
Q2	10,012.9	3,557.3	1,887.1	54.4%	30.4%	22.8%	24.8%
Q3	10,269.1	3,637.0	2,007.9	55.0%	30.4%	23.1%	25.0%
Q4 & YE	10,463.3	3,710.6	2,133.4	55.9%	30.4%	23.9%	25.5%
2007 Q1	10,670.2	3,826.4	2,215.9	56.6%	31.0%	25.0%	26.5%
Q2	10,881.2	3,942.5	2,286.6	57.2%	31.4%	25.8%	27.2%
Q3	11,034.2	4,105.9	2,228.1	57.4%	31.8%	26.6%	27.9%
Q4 & YE	11,170.9	4,319.8	2,162.7	58.0%	31.3%	26.4%	27.6%
2008 Q1	11,239.0	4,455.3	2,088.7	58.2%	30.7%	25.7%	27.0%
Q2	11,254.2	4,611.3	2,025.3	59.0%	30.2%	25.1%	26.4%
Q3	11,166.8	4,741.7	1,931.9	59.8%	29.9%	25.1%	26.3%
Q4 & YE	11,030.2	4,810.8	1,838.6	60.3%	29.3%	24.3%	25.6%
2009 Q1	11,024.3	4,882.8	1,765.0	60.3%	29.5%	24.2%	25.6%
Q2	10,951.1	5,011.5	1,680.5	61.1%	29.4%	23.6%	25.1%
Q3	10,851.9	5,133.0	1,596.8	62.0%	29.9%	23.7%	25.4%

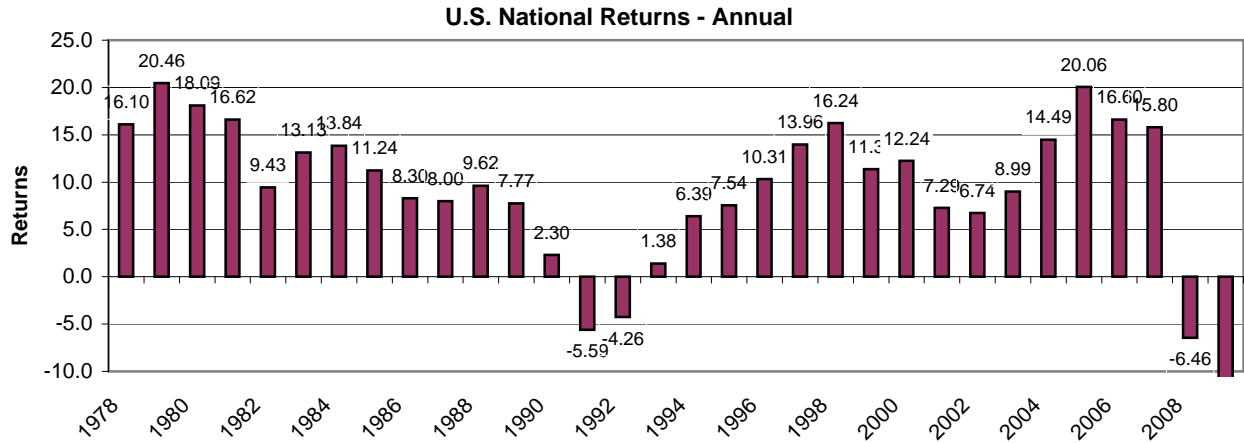


Exhibit 22
U.S. Property Vacancy Rates
Quarterly

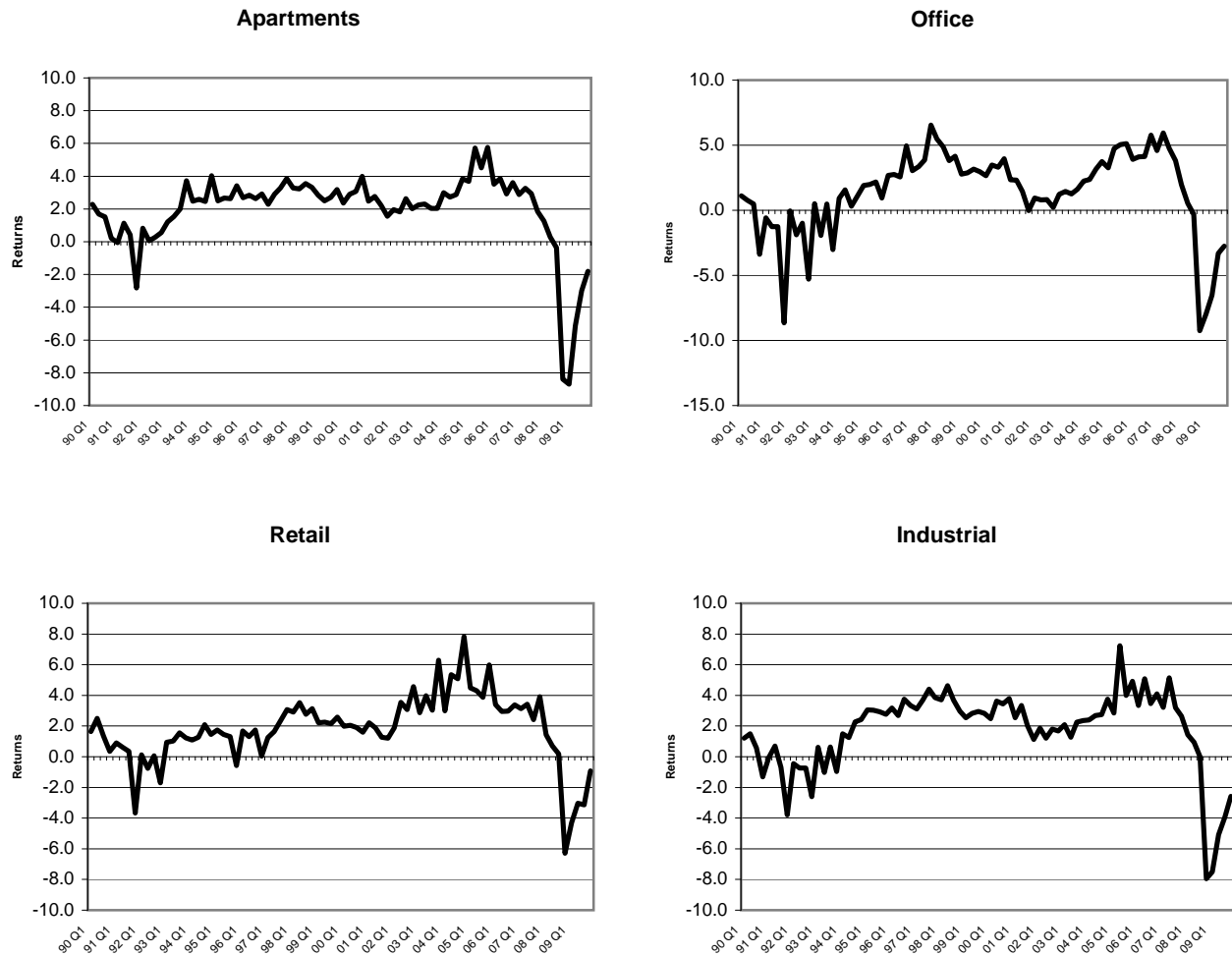
Updated January 12, 2010



Source: CBRE Torto Wheaton Research. Data as of 2008Q2.
© 2008 CMSA - Commercial Mortgage Securities Association, all rights reserved.



US Quarterly Returns - By Property Type



Source: National Council of Real Estate Investment Fiduciaries.

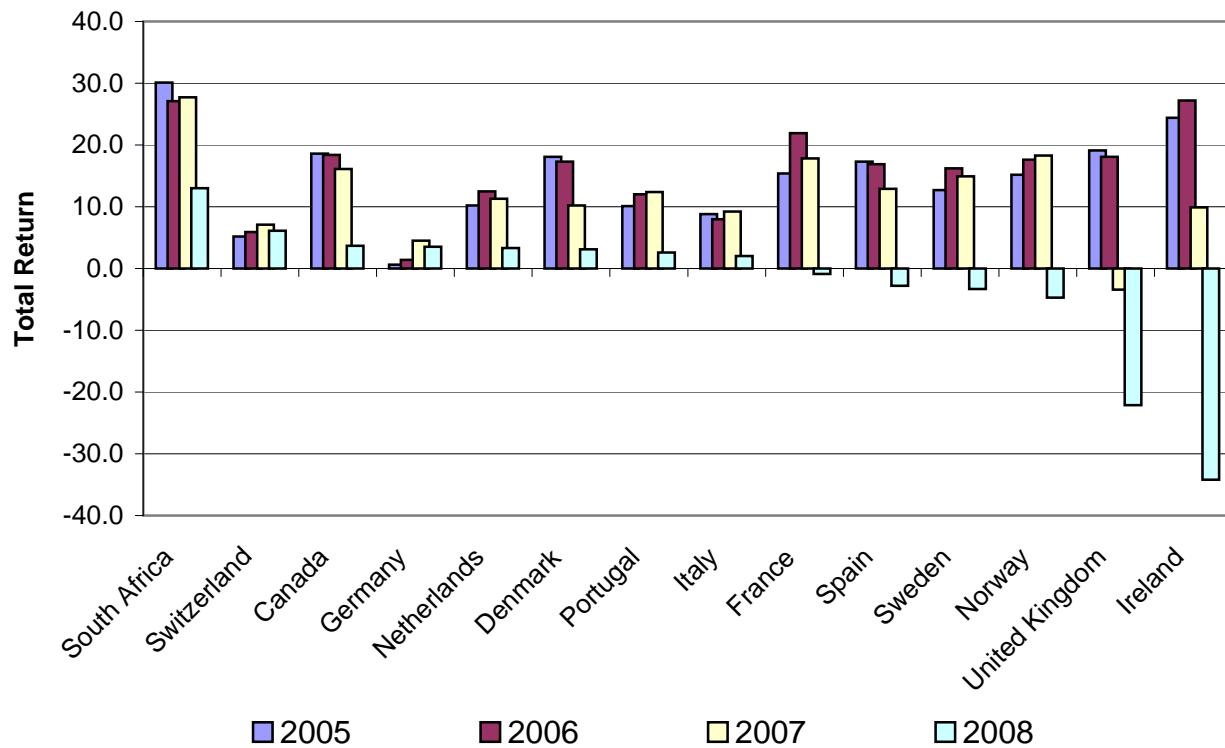
© 2008 CMSA - Commercial Mortgage Securities Association, all rights reserved.



Global Property Returns

(Sorted by 2008 returns)

	Total Returns (%)							
	2001	2002	2003	2004	2005	2006	2007	2008
South Africa	10.5	9.6	15.3	23.4	30.1	27.1	27.7	13
Switzerland	-	5.6	5.4	5.2	5.2	5.9	7.1	6.1
Canada	9.3	8.8	8.3	12.9	18.6	18.4	16.1	3.7
Germany	5.3	3.9	2.9	1.1	0.6	1.4	4.5	3.5
Netherlands	11.4	8.8	7.1	7.8	10.2	12.5	11.3	3.3
Denmark	11.4	9.4	7.2	6.6	18.1	17.3	10.2	3.1
Portugal	13.1	13.8	9.8	10.5	10.1	12.0	12.4	2.6
Italy	-	-	10.8	8.3	8.8	8.0	9.2	2
France	9.7	8.6	8.0	10.0	15.4	21.9	17.8	-0.9
Spain	9.2	8.3	8.4	11.3	17.3	16.9	12.9	-2.8
Sweden	4.6	2.4	0.9	5.8	12.7	16.2	14.9	-3.3
Norway	10.8	7.0	7.6	10.4	15.2	17.6	18.3	-4.7
United Kingdom	6.8	9.6	10.9	18.3	19.1	18.1	-3.4	-22.1
Ireland	8.1	2.4	12.4	11.4	24.4	27.2	9.9	-34.2



Source: Investment Property Databank (IPD)

© 2008 CMSA - Commercial Mortgage Securities Association, all rights reserved.



Exhibit 25

Real Estate Properties Sales Volume - Properties over \$5 million

Updated November 25, 2009

Core Properties
(\$ billions)

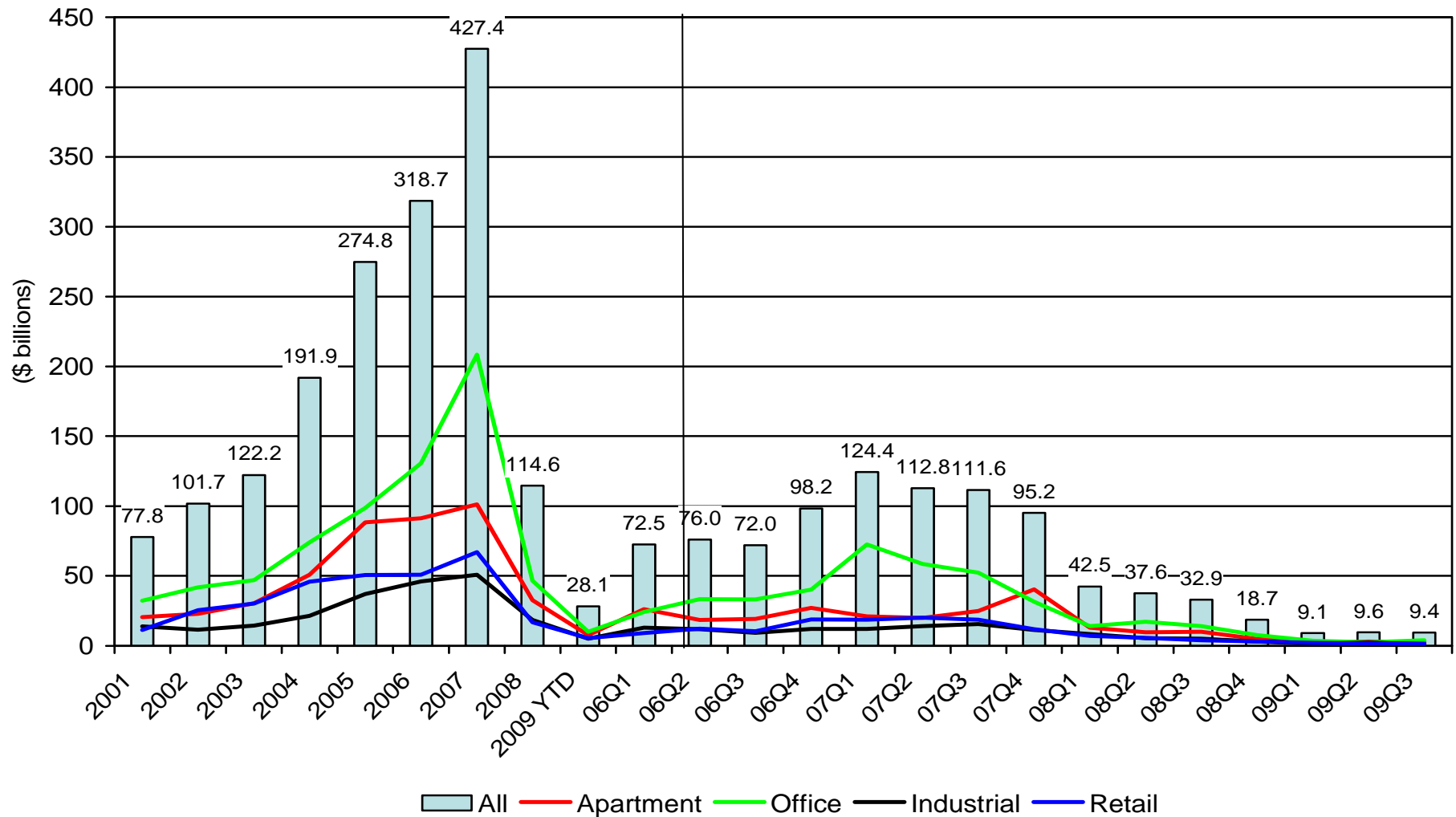
	All Core	Apartments	% of Total	Industrial	% of Total	Office	% of Total	Retail	% of Total
2001	78.8	20.6	26.2%	13.8	17.5%	32.1	40.7%	12.3	15.6%
2002	101.1	23.3	23.1%	11.6	11.5%	40.6	40.2%	25.5	25.3%
2003	122.7	30.1	24.5%	14.5	11.8%	47.3	38.6%	30.8	25.1%
2004	193.7	51.1	26.4%	21.5	11.1%	74.3	38.4%	46.8	24.2%
2005	275.2	86.2	31.3%	38.1	13.8%	99.5	36.2%	51.4	18.7%
2006	320.5	92.3	28.8%	46.1	14.4%	131.0	40.9%	51.2	16.0%
2007	419.4	99.8	23.8%	51.3	12.2%	206.0	49.1%	62.3	14.9%
2008	131.8	37.7	28.6%	21.6	16.4%	52.7	40.0%	19.8	15.1%
2007 Jan	31.3	6.9	22.1%	5.2	16.6%	13.7	43.7%	5.5	17.6%
Feb	64.4	6.2	9.7%	3.1	4.8%	46.5	72.2%	8.6	13.3%
Mar	27.3	7.5	27.4%	3.7	13.7%	11.1	40.7%	5.0	18.2%
Q1	123.0	20.6	16.8%	12.0	9.8%	71.3	58.0%	19.1	15.5%
Apr	39.1	6.6	16.8%	3.2	8.3%	24.5	62.8%	4.7	12.2%
May	32.3	5.8	18.0%	3.5	10.8%	19.0	58.8%	4.0	12.4%
Jun	36.5	7.3	20.0%	7.4	20.2%	16.4	45.0%	5.4	14.8%
Q2	107.8	19.7	18.2%	14.1	13.1%	59.9	55.6%	14.2	13.1%
Jul	48.4	7.1	14.8%	7.3	15.0%	24.6	50.8%	9.4	19.4%
Aug	29.8	7.1	23.9%	4.0	13.3%	13.6	45.7%	5.1	17.1%
Sep	23.1	8.7	37.7%	3.7	15.9%	7.9	34.3%	2.8	12.1%
Q3	110.1	25.0	22.7%	16.2	14.7%	50.1	45.5%	18.8	17.1%
Oct	39.4	26.6	67.3%	3.2	8.2%	6.0	15.2%	3.6	9.2%
Nov	21.7	4.7	21.6%	2.5	11.4%	10.9	50.3%	3.6	16.6%
Dec	26.2	5.3	20.3%	4.5	17.3%	11.8	44.9%	4.6	17.5%
Q4	94.9	39.8	41.9%	11.1	11.7%	31.2	32.9%	12.8	13.5%
2008 Jan	15.7	4.9	31.3%	2.5	15.9%	5.4	34.4%	2.9	18.5%
Feb	12.7	5.3	41.7%	1.9	15.0%	3.5	27.3%	2.0	16.0%
Mar	14.4	3.1	21.2%	3.9	26.9%	5.4	37.4%	2.1	14.5%
Q1	42.8	13.3	31.0%	8.3	19.3%	14.3	33.3%	7.0	16.4%
Apr	10.0	1.6	16.0%	1.6	16.1%	5.3	52.7%	1.5	15.2%
May	9.4	3.0	32.0%	1.6	17.1%	3.2	33.8%	1.6	17.1%
Jun	17.9	4.9	27.5%	2.2	12.1%	8.3	46.4%	2.5	14.0%
Q2	37.3	9.5	25.6%	5.4	14.4%	16.8	44.9%	5.6	15.1%
Jul	10.1	3.5	34.7%	1.5	14.5%	4.0	39.9%	1.1	11.0%
Aug	12.3	3.9	31.5%	1.5	12.4%	5.7	46.3%	1.2	9.9%
Sep	10.5	2.6	24.4%	1.8	17.4%	4.4	41.7%	1.7	16.5%
Q3	32.9	9.9	30.2%	4.8	14.6%	14.1	42.9%	4.0	12.3%
Oct	6.6	2.0	30.4%	0.8	11.5%	2.9	43.6%	1.0	14.5%
Nov	4.7	0.8	17.6%	1.0	21.3%	1.8	37.8%	1.1	23.3%
Dec	7.5	2.1	27.9%	1.3	17.8%	3.0	39.8%	1.1	14.5%
Q4	18.8	4.9	26.2%	3.1	16.5%	7.6	40.6%	3.1	16.7%
2009 Jan	3.8	0.6	16.8%	0.5	13.1%	1.6	42.4%	1.0	27.7%
Feb	2.6	0.8	30.5%	0.5	17.9%	0.8	31.5%	0.5	20.1%
Mar	2.8	0.6	22.0%	0.5	17.3%	1.2	41.3%	0.5	19.4%
Q1	9.2	2.0	22.3%	1.4	15.7%	3.6	39.0%	2.1	23.0%
Apr	2.5	1.0	38.3%	0.5	20.2%	0.5	20.8%	0.5	20.6%
May	2.8	0.7	25.0%	0.6	21.7%	0.9	31.8%	0.6	21.5%
Jun	4.5	1.5	34.1%	1.3	27.9%	1.2	27.8%	0.5	10.2%
Q2	9.8	3.2	32.6%	2.4	24.2%	2.6	27.1%	1.6	16.1%
Jul	3.6	1.2	33.6%	0.5	15.0%	1.3	36.2%	0.5	15.3%
Aug	4.3	0.8	18.8%	0.6	14.6%	1.9	44.0%	1.0	22.5%
Sep	4.4	1.5	34.5%	0.4	9.7%	1.7	38.5%	0.8	17.3%
Q3	12.3	3.5	28.8%	1.6	12.9%	4.9	39.8%	2.3	18.5%
Oct	4.6	1.6	35.0%	0.5	10.9%	0.9	19.2%	1.6	34.8%
Nov	1.2	0.5	43.0%	0.2	17.0%	0.2	16.0%	0.3	23.9%
Dec									
Q4									

Source: Real Capital Analytics. Data from past periods may differ from previous reports due to updated information.

© 2008 CMSA - Commercial Mortgage Securities Association, all rights reserved.



Sales of Large Commercial Properties



Source: Real Capital Analytics. Limited to properties \$5 million or greater. 2009 YTD data as of January 2009.

Data from past periods may differ from previous reports due to updated information.

© 2008 CMSA - Commercial Mortgage Securities Association, all rights reserved.



Capitalization Rates - U.S. Core Properties over \$5 million

Updated November 25, 2009

	All Core	Apartments	Industrial	Office	Retail
2001	9.25	8.56	9.59	9.65	9.47
2002	8.84	8.13	9.39	9.19	9.16
2003	8.16	7.37	8.81	8.63	8.42
2004	7.51	6.80	8.23	7.87	7.81
2005	6.90	6.13	7.63	7.30	7.23
2006	6.67	6.08	7.22	6.96	6.82
2007	6.49	6.24	6.95	6.45	6.62
2008	6.85	6.48	7.44	7.05	6.93
2007 Jan	6.55	6.13	6.98	6.51	6.78
Feb	6.39	6.14	6.85	6.56	6.35
Mar	6.52	6.09	6.99	6.64	6.66
Q1	6.46	6.12	6.95	6.56	6.55
Apr	6.27	5.86	6.97	6.07	6.59
May	6.44	6.29	6.81	6.17	6.69
Jun	6.45	6.32	6.73	6.46	6.43
Q2	6.38	6.16	6.81	6.21	6.56
Jul	6.48	6.19	6.97	6.41	6.57
Aug	6.53	6.05	6.64	6.65	6.83
Sep	6.57	6.32	6.99	6.54	6.68
Q3	6.51	6.19	6.89	6.51	6.66
Oct	6.62	6.43	7.14	6.65	6.60
Nov	6.47	6.07	7.16	6.37	6.73
Dec	6.75	6.35	7.35	6.71	6.80
Q4	6.62	6.37	7.24	6.57	6.71
2008 Jan	6.55	6.13	6.96	6.72	6.89
Feb	6.77	6.26	7.42	7.04	6.91
Mar	6.93	6.53	7.48	7.00	7.05
Q1	6.74	6.27	7.31	6.90	6.94
Apr	6.69	6.38	7.13	6.72	6.79
May	6.64	6.41	7.44	6.74	6.60
Jun	6.96	6.69	7.34	7.25	6.88
Q2	6.81	6.55	7.31	6.99	6.78
Jul	6.83	6.46	7.32	7.45	6.78
Aug	6.80	6.59	7.29	7.19	6.72
Sep	6.88	6.45	7.73	6.96	6.94
Q3	6.84	6.51	7.47	7.19	6.83
Oct	6.95	6.67	7.38	6.62	7.30
Nov	7.41	6.89	8.58	7.68	7.19
Dec	7.29	7.02	7.83	7.55	7.40
Q4	7.20	6.86	7.96	7.23	7.30
2009 Jan	7.32	6.95	7.09	7.96	7.43
Feb	7.32	6.46	8.67	7.18	7.63
Mar	7.26	6.82	8.32	7.70	7.08
Q1	7.30	6.72	8.01	7.70	7.39
Apr	7.02	6.36	8.00	7.20	7.27
May	7.55	7.36	8.00	7.72	7.43
Jun	7.60	7.12	8.31	8.03	7.84
Q2	7.44	6.94	8.16	7.77	7.50
Jul	7.90	7.47	8.40	8.39	7.97
Aug	8.04	7.63	9.52	8.14	7.84
Sep	7.57	6.81	8.64	9.04	7.74
Q3	7.83	7.22	8.91	8.52	7.84
Oct	8.04	7.09	10.13	9.05	8.38
Nov	7.02	7.13	7.21	6.21	7.06
Dec					
Q4					

Source: Real Capital Analytics.

Data from past periods may differ from previous reports due to updated information.

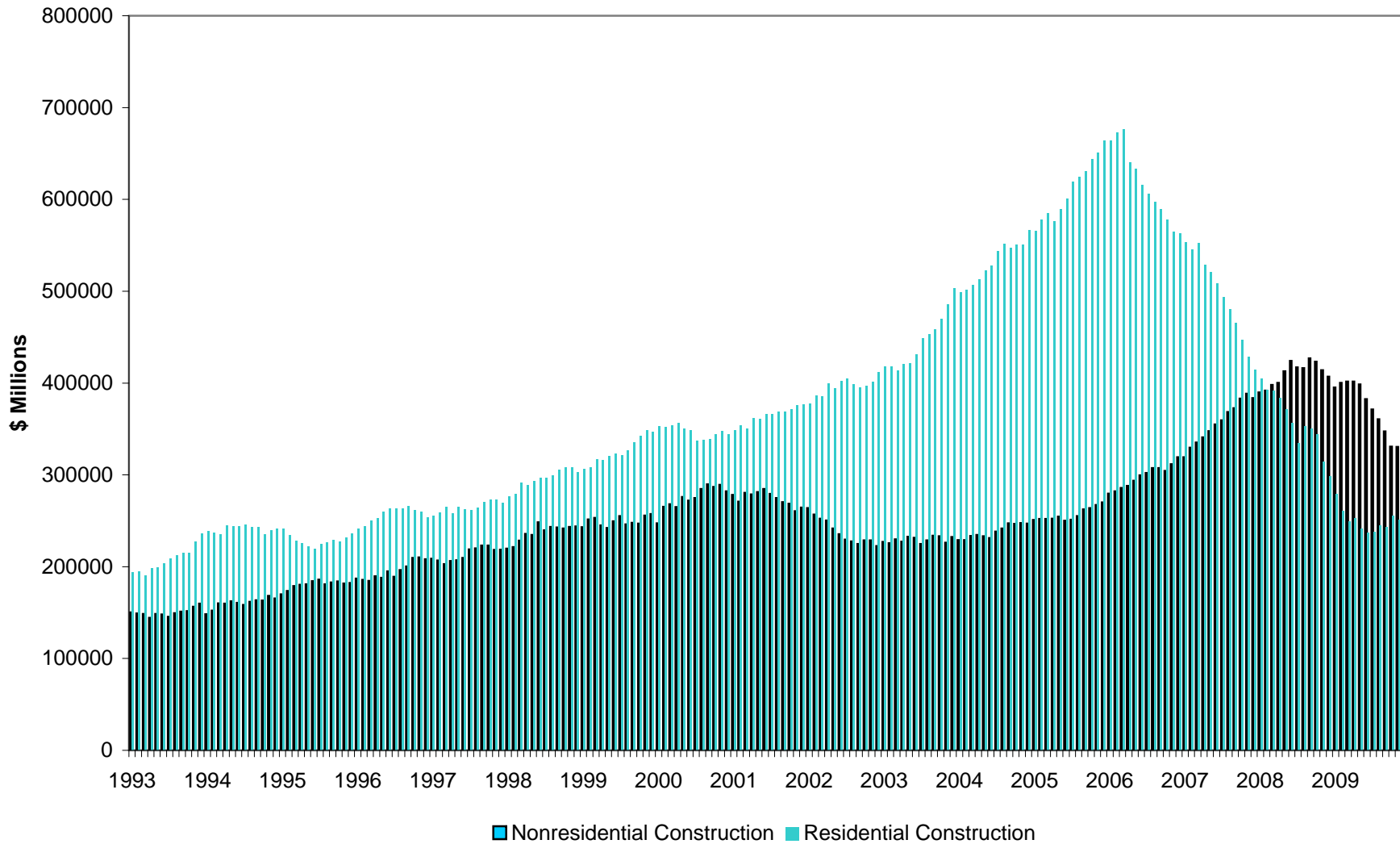
© 2008 CMSA - Commercial Mortgage Securities Association, all rights reserved.



Exhibit 28

Private Residential and Nonresidential Construction in Place Seasonally Adjusted Annual Rate

Updated January 12, 2010



Source: CMSA, U.S. Census

© 2008 CMSA - Commercial Mortgage Securities Association, all rights reserved.



Top Ten Deals - Globally

Issuer	Amount	PRICING	Distribution	Collateral
1 Wachovia Bank Commercial Mortgage Trust	7,903.5	03/14/07	US	US
2 GS Mortgage Securities Trust	7,562.8	06/21/07	US	US
3 German Residential Asset Note Distributor PLC	6,907.8	07/28/06	Europe	Germany
4 GS Mortgage Securities Corp. II	6,867.2	06/01/07	US	US
5 Societa Cartolarizzazione Immobili Pubblici Srl (SCIP)	6,644.3	12/04/02	Europe	Italy
6 CD Commercial Mortgage Trust	6,640.3	03/14/07	US	US
7 Greenwich Capital Commercial Funding Corp.2007-GG9	6,575.9	02/21/07	US	US
8 Wachovia Bank Commercial Mortgage Trust	5,845.5	05/11/07	US	US
9 Societa Cartolarizzazione Immobili Pubblici Srl (SCIP)	5,647.8	04/21/05	Europe	Italy
10 J.P. Morgan Chase Commercial Mortgage Securities Trust	5,414.2	06/28/07	US	US

Top Ten Months by Issuance - US

1	March 2007	38,477.4
2	June 2007	37,359.7
3	August 2007	29,903.9
4	December 2006	29,865.1
5	March 2006	28,335.0
6	June 2006	25,505.7
7	December 2005	24,421.3
8	September 2006	23,407.3
9	June 2005	22,653.7
10	October 2006	21,852.5

Top Ten Months by Issuance - Europe

1	June 2007	19,574.2
2	July 2006	17,768.9
3	November 2006	13,421.6
4	April 2005	12,177.9
5	December 2006	10,097.3
6	March 2007	10,074.9
7	March 2006	7,979.1
8	December 2002	7,964.8
9	June 2006	7,325.8
10	September 2006	7,222.0

Top Ten Months by Issuance - Total

1	June 2007	59,043.5
2	March 2007	49,013.3
3	December 2006	41,821.4
4	March 2006	37,268.8
5	November 2006	35,666.1
6	August 2007	34,381.8
7	June 2006	34,284.2
8	September 2006	32,524.1
9	December 2005	31,487.5
10	May 2007	29,060.5

Source: Commercial Mortgage Alert

© 2008 CMSA - Commercial Mortgage Securities Association, all rights reserved.



CMBS Issuance - Breakdown by Period

(\$ millions)

	United States		Europe		Other		Total	
	Monthly	Quarterly	Monthly	Quarterly	Monthly	Quarterly	Monthly	Quarterly
2009 January	0.0		7,648.2		0.0		7,648.2	
February	0.0		9,660.6		154.7		9,815.3	
March	0.0		56.3		838.9		895.2	
1Q		0.0		17,365.1		993.6		18,358.7
April	0.0		0.0		167.6		167.6	
May	0.0		0.0		0.0		0.0	
June	638.5		3,844.1		802.4		5,285.0	
2Q		638.5		3,844.1		970.0		5,452.6
July	250.0		594.1		18.2		862.3	
August	0.0		0.0		222.9		222.9	
September	0.0		931.0		13.4		944.4	
3Q		250.0		1,525.1		254.5		2,029.6
October	80.6		0.0		0.0		80.6	
November	400.0		0.0		0.0		400.0	
December	1,704.4		0.0		133.6		1,838.0	
4Q		2,185.0		0.0		133.6		2,318.6
Year		3,073.6		22,734.3		2,351.7		28,159.6
2008 January	0.0		0.0		0.0		0.0	
February	1,233.9		3,059.4		0.0		4,293.3	
March	4,670.6		0.0		1,430.3		6,100.9	
1Q		5,904.5		3,059.4		1,430.3		10,394.2
April	4,022.9		453.1		4,276.1		8,752.1	
May	948.8		0.0		221.4		1,170.2	
June	1,269.7		0.0		181.8		1,451.5	
2Q		6,241.4		453.1		4,679.3		11,373.8
July	0.0		792.0		879.8		1,671.8	
August	0.0		0.0		49.8		49.8	
September	0.0		4,421.9		207.6		4,629.5	
3Q		0.0		5,213.9		1,137.2		6,351.1
October	0.0		724.7		67.0		791.7	
November	0.0		116.6		0.0		116.6	
December	0.0		0.0		556.2		556.2	
4Q		0.0		841.3		623.2		1,464.5
Year		12,145.9		9,567.7		7,870.0		29,583.6
2007 January	1,554.5		2,372.3		831.0		4,757.8	
February	21,123.8		4,630.3		1,682.8		27,436.9	
March	38,477.4		10,074.9		461.0		49,013.3	
1Q		61,155.7		17,077.5		2,974.8		81,208.0
April	17,318.6		3,853.1		1,283.6		22,455.3	
May	21,157.2		6,431.6		1,575.9		29,164.7	
June	37,356.5		19,574.2		2,112.8		59,043.5	
2Q		75,832.3		29,858.9		4,972.3		110,663.5
July	21,796.8		6,673.7		1,301.6		29,772.1	
August	29,903.9		3,663.4		1,643.2		35,210.5	
September	8,238.8		0.0		4,052.2		12,291.0	
3Q		59,939.5		10,337.1		6,997.0		77,273.6
October	6,271.4		466.5		1,843.4		8,581.3	
November	17,101.6		4,114.9		3,577.9		24,794.4	
December	9,892.4		2,208.4		745.1		12,845.9	
4Q		33,265.5		6,789.8		6,166.4		46,221.7
Year		230,193.0		64,063.3		21,110.5		315,366.8
2006 January	6,197.9		986.1		142.6		7,326.6	



CMBS Issuance - Breakdown by Period

(\$ millions)

	United States		Europe		Other		Total	
	Monthly	Quarterly	Monthly	Quarterly	Monthly	Quarterly	Monthly	Quarterly
February	11,926.9		2,333.2		1,136.4		15,396.5	
March	28,335.0		7,979.1		954.7		37,268.8	
1Q		46,459.9		11,298.4		2,233.7		59,992.0
April	6,023.2		2,810.2		3,624.7		12,458.1	
May	10,855.1		2,376.5		317.3		13,548.9	
June	25,505.7		7,325.8		1,452.7		34,284.2	
2Q		42,384.0		12,512.5		5,394.7		60,291.2
July	5,903.6		17,768.9		426.8		24,099.3	
August	12,094.7		2,557.5		285.9		14,938.1	
September	23,407.3		7,222.0		1,894.8		32,524.1	
3Q		41,405.6		27,548.4		2,607.5		71,561.5
October	22,267.9		3,704.3		2,788.1		28,760.3	
November	20,271.5		13,241.6		2,153.0		35,666.1	
December	29,865.1		10,097.3		1,859.0		41,821.4	
4Q		72,404.6		27,043.2		6,800.1		106,247.9
Year		202,654.1		78,402.5		17,036.0		298,092.6

^{1/} As of September 30, 2008

Source: Commercial Mortgage Alert

2005 January	8,160.7		1,128.3		0.0		9,289.0	
February	3,855.5		5,404.6		198.8		9,458.9	
March	20,939.5		2,914.5		1,524.0		25,378.0	
1Q		32,955.7		9,447.4		1,722.8		44,125.9
April	6,173.5		12,177.9		818.0		19,169.4	
May	10,600.2		3,313.4		1,074.7		14,988.3	
June	22,653.7		4,199.8		1,218.7		28,072.2	
2Q		39,427.4		19,691.1		3,111.4		62,229.9
July	8,026.3		4,639.3		2,191.5		14,857.1	
August	19,128.4		1,780.7		1,954.8		22,863.9	
September	11,845.6		4,667.1		909.0		17,421.7	
3Q		39,000.3		11,087.1		5,055.3		55,142.7
October	21,852.5		2,711.5		2,290.6		26,854.6	
November	11,077.2		6,603.8		1,035.2		18,716.2	
December	24,421.3		6,278.0		788.2		31,487.5	
4Q		57,351.0		15,593.3		4,114.0		77,058.3
Year		168,734.5		55,818.9		14,003.5		238,556.9

2004 January	4,345.8		0.0		1,286.3		5,632.1	
February	6,428.7		3,048.8		1,588.6		11,066.1	
March	8,201.7		943.8		1,197.7		10,343.2	
1Q		18,976.2		3,992.6		4,072.6		27,041.4
April	9,698.7		2,587.2		254.7		12,540.6	
May	4,615.6		1,109.1		2,082.0		7,806.7	
June	10,310.8		885.5		850.6		12,046.9	
2Q		24,625.1		4,581.8		3,187.3		32,394.2
July	8,676.3		1,003.7		297.7		9,977.7	
August	8,427.6		2,674.9		664.8		11,767.3	
September	4,441.4		1,594.4		1,461.1		7,496.9	
3Q		21,545.3		5,273.0		2,423.6		29,241.9
October	8,814.4		6,266.9		841.0		15,922.3	
November	9,911.8		1,668.3		1,038.4		12,618.5	
December	9,433.6		1,334.9		195.4		10,963.9	
4Q		28,159.8		9,270.1		2,074.8		39,504.7
Year		93,306.4		23,117.5		11,758.3		128,182.2

2003 January	2,239.6		0.0		296.6		2,536.2	
--------------	---------	--	-----	--	-------	--	---------	--



CMBS Issuance - Breakdown by Period

(\$ millions)

	United States		Europe		Other		Total	
	Monthly	Quarterly	Monthly	Quarterly	Monthly	Quarterly	Monthly	Quarterly
February	1,861.9		572.8		782.9		3,217.6	
March	10,818.8		0.0		313.8		11,132.6	
1Q		14,920.3		572.8		1,393.3		16,886.4
April	4,731.1		387.0		425.0		5,543.1	
May	6,982.7		2,230.8		549.5		9,763.0	
June	8,491.2		404.0		1,193.8		10,089.0	
2Q		20,205.0		3,021.8		2,168.3		25,395.1
July	5,223.4		2,327.8		562.2		8,113.4	
August	5,134.6		0.0		226.3		5,360.9	
September	7,290.4		1,002.2		451.6		8,744.2	
3Q		17,648.4		3,330.0		1,240.1		22,218.5
October	4,339.8		978.1		919.1		6,237.0	
November	12,683.3		3,240.8		1,264.4		17,188.5	
December	8,051.4		2,556.2		118.0		10,725.6	
4Q		25,074.4		6,775.1		2,301.5		34,151.0
Year		77,848.1		13,699.7		7,103.2		98,651.0

Source: Commercial Mortgage Alert

2002 January	1,051.6		0.0		18.7		1,070.3	
February	2,904.6		1,787.9		465.4		5,157.9	
March	5,200.0		0.0		1,443.0		6,643.0	
1Q		9,156.2		1,787.9		1,927.1		12,871.2
April	3,623.9		518.8		714.4		4,857.1	
May	4,954.0		1,386.3		272.7		6,613.0	
June	5,765.5		723.6		1,029.1		7,518.2	
2Q		14,343.4		2,628.7		2,016.2		18,988.3
July	3,036.7		2,220.6		921.4		6,178.7	
August	5,138.2		2,439.1		176.1		7,753.4	
September	4,298.8		799.4		429.9		5,528.1	
3Q		12,473.7		5,459.1		1,527.4		19,460.1
October	4,672.6		2,208.8		683.0		7,564.4	
November	4,634.3		516.2		1,518.4		6,668.9	
December	6,793.4		7,964.8		468.3		15,226.5	
4Q		16,100.3		10,689.8		2,669.7		29,459.8
Year		52,073.6		20,565.5		8,140.4		80,779.5

2001 January	2,449.4		0.0		132.3		2,581.7	
February	2,687.5		174.1		683.5		3,545.1	
March	6,877.0		1,728.2		365.2		8,970.4	
1Q		12,013.9		1,902.3		1,181.0		15,097.2
April	2,811.5		945.0		558.7		4,315.2	
May	8,806.1		1,239.4		443.7		10,489.2	
June	4,076.3		1,881.6		177.6		6,135.5	
2Q		15,693.9		4,066.0		1,180.0		20,939.9
July	7,951.2		694.5		816.8		9,462.6	
August	6,013.6		804.7		620.6		7,438.9	
September	1,691.3		241.2		297.6		2,230.1	
3Q		15,656.1		1,740.4		1,735.0		19,131.6
October	4,003.6		0.0		0.0		4,003.6	
November	8,777.4		1,945.2		2,364.8		13,087.4	
December	11,005.0		6,211.0		388.1		17,604.1	
4Q		23,786.0		8,156.2		2,752.9		34,695.1
Year		67,149.9		15,865.0		6,848.9		89,863.7

2000 January	3,382.6		0.0		0.0		3,382.6	
--------------	---------	--	-----	--	-----	--	---------	--



CMBS Issuance - Breakdown by Period

(\$ millions)

	United States		Europe		Other		Total	
	Monthly	Quarterly	Monthly	Quarterly	Monthly	Quarterly	Monthly	Quarterly
February	2,364.5		1,480.4		964.2		4,809.1	
March	2,172.8		2,211.8		359.1		4,743.7	
1Q		7,919.8		3,692.2		1,323.3		12,935.3
April	2,164.6		0.0		0.0		2,164.6	
May	3,447.7		701.5		364.0		4,513.2	
June	6,675.0		387.0		631.0		7,693.0	
2Q		12,287.3		1,088.5		995.0		14,370.8
July	2,815.0		0.0		131.6		2,946.6	
August	2,720.3		349.7		1,385.4		4,455.4	
September	6,344.5		1,213.0		256.8		7,814.3	
3Q		11,879.8		1,562.7		1,773.8		15,216.3
October	4,779.9		0.0		928.9		5,708.8	
November	2,585.1		415.1		185.5		3,185.7	
December	7,442.4		0.0		151.4		7,593.8	
4Q		14,807.4		415.1		1,265.8		16,488.3
Year		46,894.4		6,758.5		5,357.9		59,010.8

Source: Commercial Mortgage Alert

1999 January	2,709.7		0.0		0.0		2,709.7	
February	6,812.1		946.1		657.6		8,415.8	
March	6,790.6		343.0		55.0		7,188.6	
1Q		16,312.4		1,289.1		712.6		18,314.1
April	1,883.4		0.0		0.0		1,883.4	
May	7,480.0		2,520.0		172.7		10,172.7	
June	2,631.1		0.0		592.2		3,223.3	
2Q		11,994.6		2,520.0		764.9		15,279.5
July	4,423.6		129.7		0.0		4,553.3	
August	6,221.4		272.4		243.2		6,737.0	
September	3,781.0		0.0		528.2		4,309.2	
3Q		14,425.9		402.1		771.4		15,599.4
October	4,781.0		322.2		239.3		5,342.6	
November	7,239.2		770.5		718.4		8,728.1	
December	1,818.0		574.5		0.0		2,392.5	
4Q		13,838.2		1,667.2		957.7		16,463.2
Year		56,571.1		5,878.4		3,206.6		65,656.1

1998 January	2,306.7		0.0		0.0		2,306.7	
February	4,650.6		0.0		0.0		4,650.6	
March	11,213.0		170.1		0.0		11,383.1	
1Q		18,170.2		170.1		0.0		18,340.3
April	5,502.4		0.0		0.0		5,502.4	
May	6,537.3		0.0		0.0		6,537.3	
June	10,120.9		0.0		340.5		10,461.4	
2Q		22,160.6		0.0		340.5		22,501.1
July	1,294.6		0.0		0.0		1,294.6	
August	5,104.2		0.0		0.0		5,104.2	
September	6,058.5		0.0		0.0		6,058.5	
3Q		12,457.2		0.0		0.0		12,457.2
October	7,168.5		0.0		0.0		7,168.5	
November	11,641.0		0.0		0.0		11,641.0	
December	2,734.2		0.0		118.2		2,852.4	
4Q		21,543.7		0.0		118.2		21,661.9
Year		74,331.7		170.1		458.7		74,960.5

1997 January	766.7		0.0		297.7		1,064.4	
--------------	-------	--	-----	--	-------	--	---------	--



CMBS Issuance - Breakdown by Period

(\$ millions)

	United States		Europe		Other		Total	
	Monthly	Quarterly	Monthly	Quarterly	Monthly	Quarterly	Monthly	Quarterly
February	612.0		0.0		0.0		612.0	
March	3,280.4		284.1		300.0		3,864.5	
1Q		4,659.1		284.1		597.7		5,540.9
April	1,124.4		0.0		0.0		1,124.4	
May	1,510.8		229.4		0.0		1,740.2	
June	6,024.2		193.2		0.0		6,217.4	
2Q		8,659.4		422.6		0.0		9,082.0
July	530.3		0.0		0.0		530.3	
August	1,290.3		200.7		0.0		1,491.0	
September	5,949.0		523.1		0.0		6,472.1	
3Q		7,769.7		723.8		0.0		8,493.5
October	4,654.4		337.5		0.0		4,991.9	
November	5,489.3		938.5		0.0		6,427.8	
December	5,565.8		252.8		0.0		5,818.6	
4Q		15,709.5		1,528.8		0.0		17,238.3
Year		36,797.7		2,959.3		597.7		40,354.7

Source: Commercial Mortgage Alert

1996 January	972.3		0.0		0.0		972.3	
February	3,154.3		0.0		0.0		3,154.3	
March	2,827.2		0.0		0.0		2,827.2	
1Q		6,953.8		0.0		0.0		6,953.8
April	467.8		0.0		0.0		467.8	
May	1,788.1		0.0		0.0		1,788.1	
June	2,842.4		186.7		0.0		3,029.1	
2Q		5,098.3		186.7		0.0		5,285.0
July	233.0		0.0		27.2		260.2	
August	1,209.8		0.0		0.0		1,209.8	
September	1,756.5		0.0		0.0		1,756.5	
3Q		3,199.3		0.0		27.2		3,226.5
October	2,339.1		0.0		135.6		2,474.7	
November	3,714.2		474.2		0.0		4,188.4	
December	5,033.4		133.8		0.0		5,167.2	
4Q		11,086.7		608.0		135.6		11,830.3
Year		26,338.1		794.7		162.8		27,295.6

1995 January	1,045.0		0.0		0.0		1,045.0	
February	512.1		0.0		0.0		512.1	
March	791.9		175.3		0.0		967.2	
1Q		2,349.0		175.3		0.0		2,524.3
April	639.2		380.8		0.0		1,020.0	
May	576.1		295.4		0.0		871.5	
June	1,415.4		0.0		0.0		1,415.4	
2Q		2,630.7		676.2		0.0		3,306.9
July	1,353.4		0.0		0.0		1,353.4	
August	1,563.1		0.0		0.0		1,563.1	
September	1,161.7		78.7		120.7		1,361.1	
3Q		4,078.2		78.7		120.7		4,277.6
October	2,814.0		0.0		0.0		2,814.0	
November	1,474.9		0.0		0.0		1,474.9	
December	2,403.0		0.0		0.0		2,403.0	
4Q		6,691.9		0.0		0.0		6,691.9
Year		15,749.7		930.2		120.7		16,800.6

1994 January	851.0		0.0		0.0		851.0	
--------------	-------	--	-----	--	-----	--	-------	--



CMBS Issuance - Breakdown by Period

(\$ millions)

	United States		Europe		Other		Total	
	Monthly	Quarterly	Monthly	Quarterly	Monthly	Quarterly	Monthly	Quarterly
February	650.4		0.0		0.0		650.4	
March	2,231.7		498.0		0.0		2,729.7	
1Q		3,733.1		498.0		0.0		4,231.1
April	1,668.6		1,784.7		0.0		3,453.3	
May	746.9		0.0		0.0		746.9	
June	557.8		0.0		0.0		557.8	
2Q		2,973.3		1,784.7		0.0		4,758.0
July	1,563.3		0.0		0.0		1,563.3	
August	1,761.4		0.0		0.0		1,761.4	
September	1,278.9		0.0		75.5		1,354.4	
3Q		4,603.6		0.0		75.5		4,679.1
October	906.0		0.0		0.0		906.0	
November	2,280.6		0.0		0.0		2,280.6	
December	691.7		401.6		59.5		1,152.8	
4Q		3,878.3		401.6		59.5		4,339.4
Year		15,188.3		2,684.3		135.0		18,007.6

Source: Commercial Mortgage Alert

1993 January	1,043.8		0.0		0.0		1,043.8	
February	343.0		0.0		0.0		343.0	
March	1,819.0		0.0		315.0		2,134.0	
1Q		3,205.9		0.0		315.0		3,520.9
April	862.3		0.0		0.0		862.3	
May	968.0		0.0		32.5		1,000.5	
June	1,674.0		0.0		0.0		1,674.0	
2Q		3,504.3		0.0		32.5		3,536.8
July	206.1		0.0		0.0		206.1	
August	1,385.5		0.0		0.0		1,385.5	
September	697.6		0.0		0.0		697.6	
3Q		2,289.2		0.0		0.0		2,289.2
October	1,305.8		83.5		0.0		1,389.3	
November	1,679.2		0.0		0.0		1,679.2	
December	4,027.7		0.0		0.0		4,027.7	
4Q		7,012.7		83.5		0.0		7,096.2
Year		16,012.0		83.5		347.5		16,443.0

1992 January	954.9		0.0		0.0		954.9	
February	678.3		0.0		0.0		678.3	
March	1,222.9		0.0		0.0		1,222.9	
1Q		2,856.1		0.0		0.0		2,856.1
April	1,488.5		0.0		0.0		1,488.5	
May	798.2		0.0		0.0		798.2	
June	1,986.4		0.0		0.0		1,986.4	
2Q		4,273.0		0.0		0.0		4,273.0
July	1,060.9		0.0		0.0		1,060.9	
August	297.0		0.0		0.0		297.0	
September	1,832.0		0.0		0.0		1,832.0	
3Q		3,189.8		0.0		0.0		3,189.8
October	1,451.0		0.0		0.0		1,451.0	
November	1,254.1		0.0		0.0		1,254.1	
December	842.4		0.0		0.0		842.4	
4Q		3,547.5		0.0		0.0		3,547.5
Year		13,866.5		0.0		0.0		13,866.5

1991 January	182.3		564.0		0.0		746.3	
--------------	-------	--	-------	--	-----	--	-------	--



CMBS Issuance - Breakdown by Period

(\$ millions)

	United States		Europe		Other		Total	
	Monthly	Quarterly	Monthly	Quarterly	Monthly	Quarterly	Monthly	Quarterly
February	399.5		0.0		0.0		399.5	
March	120.9		0.0		0.0		120.9	
1Q		702.7		564.0		0.0		1,266.7
April	97.6		0.0		0.0		97.6	
May	90.0		0.0		0.0		90.0	
June	157.6		0.0		0.0		157.6	
2Q		345.1		0.0		0.0		345.1
July	772.3		0.0		0.0		772.3	
August	629.9		0.0		0.0		629.9	
September	586.6		0.0		0.0		586.6	
3Q		1,988.8		0.0		0.0		1,988.8
October	585.3		0.0		0.0		585.3	
November	816.8		0.0		0.0		816.8	
December	892.0		0.0		0.0		892.0	
4Q		2,294.1		0.0		0.0		2,294.1
Year		5,330.6		564.0		0.0		5,894.6

Source: Commercial Mortgage Alert

1990 January	42.0		0.0		0.0		42.0	
February	465.0		0.0		0.0		465.0	
March	522.9		135.0		0.0		657.9	
1Q		1,029.9		135.0		0.0		1,164.9
April	100.0		0.0		0.0		100.0	
May	127.1		0.0		0.0		127.1	
June	38.8		0.0		0.0		38.8	
2Q		265.9		0.0		0.0		265.9
July	193.0		0.0		160.0		353.0	
August	0.0		0.0		0.0		0.0	
September	375.0		0.0		0.0		375.0	
3Q		568.0		0.0		160.0		728.0
October	0.0		0.0		0.0		0.0	
November	250.5		0.0		0.0		250.5	
December	636.3		0.0		1,102.0		1,738.3	
4Q		886.8		0.0		1,102.0		1,988.8
Year		2,750.6		135.0		1,262.0		4,147.6



CMBS Issuance - Breakdown by Period

(\$ millions)

United States		Europe		Other		Total	
<u>Monthly</u>	<u>Quarterly</u>	<u>Monthly</u>	<u>Quarterly</u>	<u>Monthly</u>	<u>Quarterly</u>	<u>Monthly</u>	<u>Quarterly</u>

Source: Commercial Mortgage Alert

© 2008 CMSA - Commercial Mortgage Securities Association, all rights reserved.



Year	Delinquency Status																													
	Total		60+ Total		% Tot \$		30+		% Tot \$		60+		% \$		90+		% Tot \$		FCL		% Tot \$		REO		% Tot \$		Mat. Balloon		% Tot \$	
	#	(\$ Mns)	#	(\$ Mns)	%	Tot \$	#	(\$ Mns)	%	Tot \$	#	(\$ Mns)	%	Tot \$	#	(\$ Mns)	%	Tot \$	#	(\$ Mns)	%	Tot \$	#	(\$ Mns)	%	Tot \$	#	(\$ Mns)	%	Tot \$
1996	120	525.2	1	1.1	0.21%	-	-	-	-	-	-	-	-	-	-	-	-	1	1.1	0.21%	-	-	-	-	-	-	-	-	-	-
1997	469	2,589.5	7	13.9	0.54%	1	3.5	0.13%	-	-	-	-	-	-	-	-	-	4	7.8	0.30%	3	6.1	0.23%	-	-	-	-	-	-	
1998	2,456	12,336.7	148	666.6	5.40%	3	7.1	0.06%	1	2.3	0.02%	12	148.7	1.21%	13	65.7	0.53%	18	129.4	1.05%	58	181.5	1.47%	-	-	-	-	-	-	
1999	4,971	22,360.6	38	109.6	0.49%	8	18.2	0.08%	1	1.9	0.01%	4	14.7	0.07%	8	22.9	0.10%	11	51.1	0.23%	10	14.8	0.07%	-	-	-	-	-	-	
2000	3,938	20,639.7	42	206.4	1.00%	9	23.8	0.12%	3	10.9	0.05%	11	32.7	0.16%	8	44.3	0.21%	16	100.1	0.49%	2	9.1	0.04%	-	-	-	-	-	-	
2001	4,196	26,279.5	46	273.9	1.04%	10	86.3	0.33%	4	46.9	0.18%	10	37.4	0.14%	13	68.6	0.26%	16	107.0	0.41%	2	11.0	0.04%	-	-	-	-	-	-	
2002	3,898	28,866.1	29	179.9	0.62%	5	15.6	0.05%	1	4.3	0.01%	7	57.7	0.20%	11	50.3	0.17%	10	67.7	0.23%	-	-	-	-	-	-	-	-		
2003	5,287	44,558.8	38	238.7	0.54%	6	22.0	0.05%	2	10.6	0.02%	11	90.6	0.20%	4	19.6	0.04%	10	53.6	0.12%	7	35.2	0.08%	-	-	-	-	-	-	
2004	6,553	68,741.1	38	250.5	0.36%	12	123.8	0.18%	8	20.4	0.03%	15	131.4	0.19%	4	19.1	0.03%	8	52.3	0.08%	2	14.0	0.02%	-	-	-	-	-	-	
2005	10,433	132,356.4	53	612.7	0.46%	12	104.9	0.08%	3	31.7	0.02%	16	154.5	0.12%	22	316.7	0.24%	8	107.3	0.08%	2	1.3	0.00%	-	-	-	-	-	-	
2006	11,754	159,661.2	67	631.0	0.40%	23	233.1	0.15%	14	94.5	0.06%	18	174.4	0.11%	26	302.1	0.19%	9	60.0	0.04%	-	-	-	-	-	-	-	-		
2007	12,509	196,911.0	39	249.8	0.13%	27	257.0	0.13%	11	95.0	0.05%	15	84.4	0.04%	13	70.4	0.04%	-	-	-	-	-	-	-	-	-	-	-		
Total	66,584	715,825.8	546	3,434.2	0.48%	116	895.3	0.13%	48	318.5	0.04%	119	926.4	0.13%	127	988.9	0.14%	109	734.7	0.10%	83	266.8	0.04%	-	-	-	-	-	-	

Property Types	Delinquency Status																													
	Total		60+ Total		% Tot \$		30+		% Tot \$		60+		% \$		90+		% Tot \$		FCL		% Tot \$		REO		% Tot \$		Mat. Balloon		% Tot \$	
	#	(\$ Mns)	#	(\$ Mns)	%	Tot \$	#	(\$ Mns)	%	Tot \$	#	(\$ Mns)	%	Tot \$	#	(\$ Mns)	%	Tot \$	#	(\$ Mns)	%	Tot \$	#	(\$ Mns)	%	Tot \$	#	(\$ Mns)	%	Tot \$
Co-op Housing	1,217	2,857.1	0	0.0	0.00%	0	0.0	0.00%	-	-	-	-	-	-	-	-	-	-	-	-	-	-	-	-	-	-	-	-	-	
Health Care	214	1,868.7	11	150.1	8.03%	1	1.1	0.06%	-	-	-	1	112.2	6.01%	3	14.7	0.78%	-	-	-	-	-	-	-	-	4	14.7	0.79%		
Industrial	5,044	37,189.7	24	163.8	0.44%	4	28.9	0.08%	1	3.9	0.01%	2	12.9	0.03%	8	105.4	0.28%	3	14.3	0.04%	5	13.7	0.04%	-	-	-	-	-		
Lodging	3,606	55,493.3	20	105.8	0.19%	7	59.6	0.11%	1	2.3	0.00%	6	25.6	0.05%	3	18.4	0.03%	6	47.5	0.09%	3	9.5	0.02%	-	-	-	-	-		
Multifamily	14,659	119,012.6	259	1,666.5	1.40%	52	391.2	0.33%	24	158.4	0.13%	74	623.7	0.52%	54	362.8	0.30%	57	378.5	0.32%	27	73.7	0.06%	-	-	-	-	-		
Mobile Home	2,020	12,909.3	10	43.3	0.34%	4	16.7	0.13%	1	8.4	0.07%	5	22.4	0.17%	2	3.1	0.02%	-	-	-	-	-	-	-	1	4.7	0.04%			
Mixed Use	1,999	30,331.0	7	25.3	0.08%	4	6.6	0.02%	2	15.5	0.05%	-	-	-	1	7.3	0.02%	-	-	-	-	-	-	2	1.3	0.00%				
Office	11,670	214,655.1	90	486.2	0.23%	16	170.7	0.08%	10	88.2	0.04%	15	74.5	0.03%	22	116.9	0.05%	18	123.2	0.06%	15	50.8	0.02%	-	-	-	-	-		
Other	719	7,301.3	5	45.9	0.63%	0	0.0	0.00%	-	-	-	-	-	-	1	1.0	0.01%	3	44.6	0.61%	1	0.2	0.00%	-	-	-	-	-		
Retail	22,533	220,151.9	114	734.4	0.33%	25	213.4	0.10%	8	40.9	0.02%	14	48.9	0.02%	31	354.4	0.16%	21	125.5	0.06%	25	98.4	0.04%	-	-	-	-	-		
Self Storage	2,895	14,041.1	6	12.9	0.09%	3	7.0	0.05%	1	0.9	0.01%	2	6.1	0.04%	2	4.9	0.03%	1	1.0	0.01%	-	-	-	-	-	-	-			
Warehouse	8	14.7	0	0.0	0.00%	0	0.0	0.00%	-	-	-	-	-	-	-	-	-	-	-	-	-	-	-	-	-	-				
Total	66,584	715,825.8	546	3,434.2	0.48%	116	895.3	0.13%	48	318.5	0.04%	119	926.4	0.13%	127	988.9	0.14%	109	734.7	0.10%	83	266.8	0.04%	-	-	-	-	-		

Source: Trepp LLC, CMSA. Data by year of securitization. Includes fixed-rate conduit loans only. FCL is loans in foreclosure; REO - real estate owned; Mat. Balloon includes performing and non-performing matured loans.

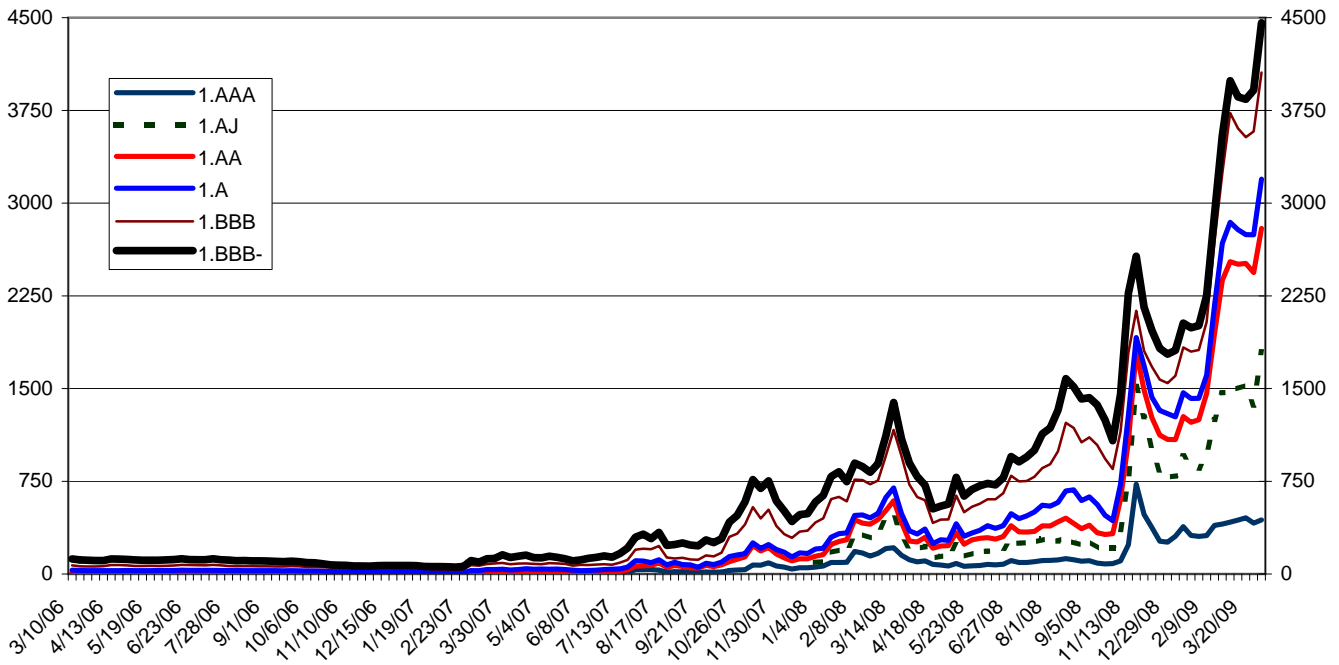


Year	Property Type	Delinquency Status																													
		Total		60+ Total		% Tot \$		30+		% Tot \$		60+		% \$		90+		% Tot \$		FCL		% Tot \$		REO		% Tot \$		Mat. Balloon		% Tot \$	
	#	(\$ Mns)	#	(\$ Mns)	%	Tot \$	#	(\$ Mns)	%	Tot \$	#	(\$ Mns)	%	Tot \$	#	(\$ Mns)	%	Tot \$	#	(\$ Mns)	%	Tot \$	#	(\$ Mns)	%	Tot \$	#	(\$ Mns)	%	Tot \$	
2004																															
Co-op Housing	210	473.1	0	0.0	0.00%	-	-	-	-	-	-	-	-	-	-	-	-	-	-	-	-	-	-	-	-	-	-	-	-	-	-
Health Care	0	0.0	0	0.0	0.00%	-	-	-	-	-	-	-	-	-	-	-	-	-	-	-	-	-	-	-	-	-	-	-	-	-	
Industrial	393	2,785.6	2	9.5	0.34%	2	23.8	0.85%	1	3.9	0.14%	1	5.7	0.20%	-	-	-	-	-	-	-	-	-	-	-	-	-	-	-	-	
Lodging	141	2,077.6	0	0.0	0.00%	-	-	-	-	-	-	-	-	-	-	-	-	-	-	-	-	-	-	-	-	-	-	-	-	-	
Multifamily	1,430	10,473.2	27	191.0	1.82%	6	65.6	0.63%	7	16.6	0.16%	11	116.7	1.11%	1	5.4	0.05%	8	52.3	0.50%	-	-	-	-	-	-	-	-	-	-	
Mobile Home	343	2,919.3	2	7.0	0.24%	1	5.5	0.19%	-	-	-	2	7.0	0.24%	-	-	-	-	-	-	-	-	-	-	-	-	-	-	-	-	
Mixed Use	158	1,792.4	0	0.0	0.00%	-	-	-	-	-	-	-	-	-	-	-	-	-	-	-	-	-	-	-	-	-	-	-	-	-	
Office	1,145	21,740.9	1	5.0	0.02%	2	27.2	0.13%	-	-	-	-	-	-	1	5.0	0.02%	-	-	-	-	-	-	-	-	-	-	-	-	-	
Other	34	383.3	0	0.0	0.00%	-	-	-	-	-	-	-	-	-	-	-	-	-	-	-	-	-	-	-	-	-	-	-	-	-	
Retail	2,363	24,311.5	6	37.9	0.16%	-	-	-	-	-	-	1	2.0	0.01%	2	8.7	0.04%	-	-	-	-	-	-	-	-	2	14.0	0.06%	-	-	
Self Storage	336	1,784.1	0	0.0	0.00%	1	1.7	0.09%	-	-	-	-	-	-	-	-	-	-	-	-	-	-	-	-	-	-	-	-	-	-	
Warehouse	0	0.0	0	0.0	0.00%	-	-	-	-	-	-	-	-	-	-	-	-	-	-	-	-	-	-	-	-	-	-	-	-	-	
Total	6,553	68,741.1	38	250.5	0.36%	12	123.8	0.18%	8	20.4	0.03%	15	131.4	0.19%	4	19.1	0.03%	8	52.3	0.08%	2	14.0	0.02%	-	-	-	-	-	-	-	
2003																															
Co-op Housing	237	524.6	0	0.0	0.00%	-	-	-	-	-	-	-	-	-	-	-	-	-	-	-	-	-	-	-	-	-	-	-	-	-	
Health Care	0	0.0	0	0.0	0.00%	-	-	-	-	-	-	-	-	-	-	-	-	-	-	-	-	-	-	-	-	-	-	-	-	-	
Industrial	399	2,189.6	2	11.5	0.52%	1	4.2	0.19%	-	-	-	-	-	-	-	-	-	-	-	-	-	-	-	-	-	1	5.7	0.26%	-	-	
Lodging	84	1,043.2	0	0.0	0.00%	1	9.0	0.86%	-	-	-	-	-	-	-	-	-	-	-	-	-	-	-	-	-	-	-	-	-	-	
Multifamily	1,259	7,335.9	29	200.4	2.73%	2	4.2	0.06%	1	2.4	0.03%	9	83.9	1.14%	3	15.7	0.21%	9	49.9	0.68%	4	25.1	0.34%	-	-	-	-	-	-	-	
Mobile Home	201	1,188.3	0	0.0	0.00%	-	-	-	-	-	-	-	-	-	-	-	-	-	-	-	-	-	-	-	-	-	-	-	-	-	
Mixed Use	130	1,588.3	0	0.0	0.00%	-	-	-	-	-	-	-	-	-	-	-	-	-	-	-	-	-	-	-	-	-	-	-	-	-	
Office	886	12,291.4	4	17.0	0.14%	-	-	-	1	8.2	0.07%	1	3.3	0.03%	1	3.9	0.03%	-	-	-	-	-	-	-	-	1	1.7	0.01%	-	-	
Other	24	286.3	0	0.0	0.00%	-	-	-	-	-	-	-	-	-	-	-	-	-	-	-	-	-	-	-	-	-	-	-	-	-	
Retail	1,883	17,490.1	2	6.4	0.04%	2	4.8	0.03%	-	-	-	-	-	-	-	-	-	-	-	-	-	-	-	-	1	3.7	0.02%	1	2.7	0.02%	
Self Storage	184	621.1	1	3.5	0.56%	-	-	-	-	-	-	1	3.5	0.56%	-	-	-	-	-	-	-	-	-	-	-	-	-	-	-	-	
Warehouse	0	0.0	0	0.0	0.00%	-	-	-	-	-	-	-	-	-	-	-	-	-	-	-	-	-	-	-	-	-	-	-	-	-	
Total	5,287	44,558.8	38	238.7	0.54%	6	22.0	0.05%	2	10.6	0.02%	11	90.6	0.20%	4	19.6	0.04%	10	53.6	0.12%	7	35.2	0.08%	-	-	-	-	-	-	-	
2002																															
Co-op Housing	132	241.3	0	0.0	0.00%	-	-	-	-	-	-	-	-	-	-	-	-	-	-	-	-	-	-	-	-	-	-	-	-	-	
Health Care	2	16.5	0	0.0	0.00%	-	-	-	-	-	-	-	-	-	-	-	-	-	-	-	-	-	-	-	-	-	-	-	-	-	
Industrial	388	2,259.1	0	0.0	0.00%	-	-	-	-	-	-	-	-	-	-	-	-	-	-	-	-	-	-	-	-	-	-	-	-	-	
Lodging	52	505.0	0	0.0	0.00%	1	3.0	0.60%	-	-	-	-	-	-	-	-	-	-	-	-	-	-	-	-	-	-	-	-	-	-	
Multifamily	1,034	5,964.2	20	141.4	2.37%	3	9.2	0.15%	1	4.3	0.07%	4	44.3	0.74%	8	40.3	0.67%	7	52.5	0.88%	-	-	-	-	-	-	-	-	-	-	
Mobile Home	130	521.1	1	5.0	0.95%	-	-	-	-	-	-	1	5.0	0.95%	-	-	-	-	-	-	-	-	-	-	-	-	-	-	-	-	
Mixed Use	72	517.1	0	0.0	0.00%	-	-	-	-	-	-	-	-	-	-	-	-	-	-	-	-	-	-	-	-	-	-	-	-	-	
Office	677	6,985.7	4	20.8	0.30%	-	-	-	-	-	-	1	5.7	0.08%	2	6.1	0.09%	1	9.0	0.13%	-	-	-	-	-	-	-	-	-	-	
Other	16	118.9	0	0.0	0.00%	-	-	-	-	-	-	-	-	-	-	-	-	-	-	-	-	-	-	-	-	-	-	-	-	-	
Retail	1,260	11,078.3	4	12.8	0.12%	1	3.4	0.03%	-	-	-	1	2.6	0.02%	1	4.0	0.04%	2	6.2	0.06%	-	-	-	-	-	-	-	-	-	-	
Self Storage	135	659.1	0	0.0	0.00%	-	-	-	-	-	-	-	-	-	-	-	-	-	-	-	-	-	-	-	-	-	-	-	-	-	
Warehouse	0	0.0	0	0.0	0.00%	-	-	-	-	-	-	-	-	-	-	-	-	-	-	-	-	-	-	-	-	-	-	-	-	-	
Total	3,898	28,866.1	29	179.9	0.62%	5	15.6	0.05%	1	4.3	0.01%	7	57.7	0.20%	11	50.3	0.17%	10	67.7	0.23%	-	-	-	-	-	-	-	-	-	-	

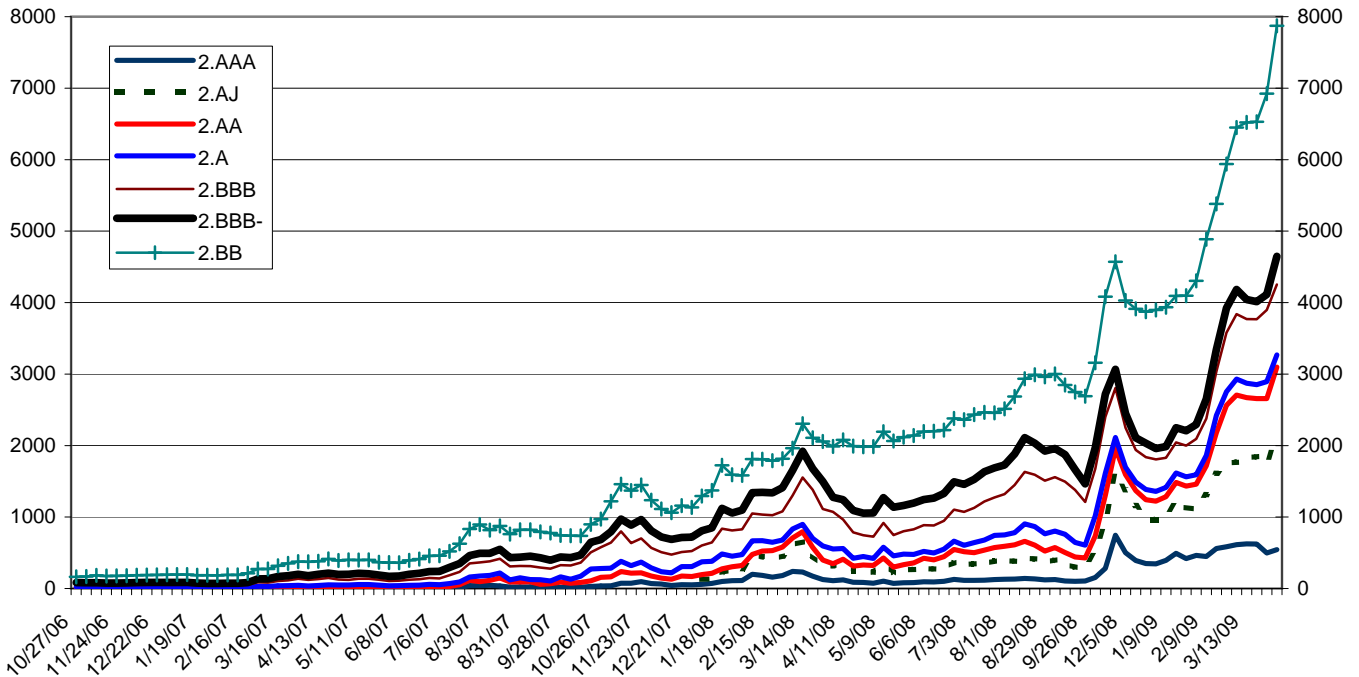
Source: Trepp LLC, CMSA. Data by year of securitization. Includes fixed-rate conduit loans only. FCL is loans in foreclosure; REO - real estate owned; Mat. Balloon includes performing and non-performing matured loans.
© 2008 CMSA - Commercial Mortgage Securities Association, all rights reserved.



CMBX.1 Spreads



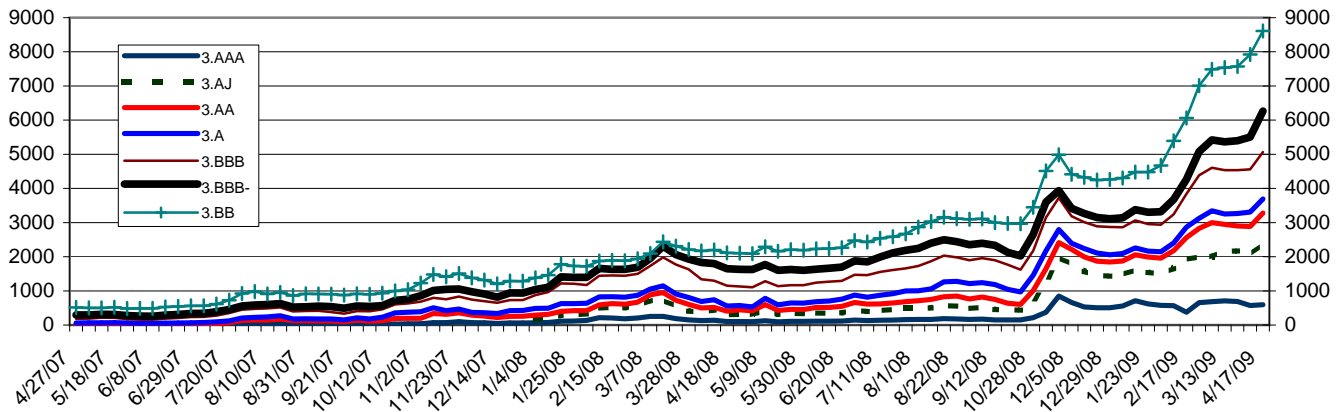
CMBX.2 Spreads



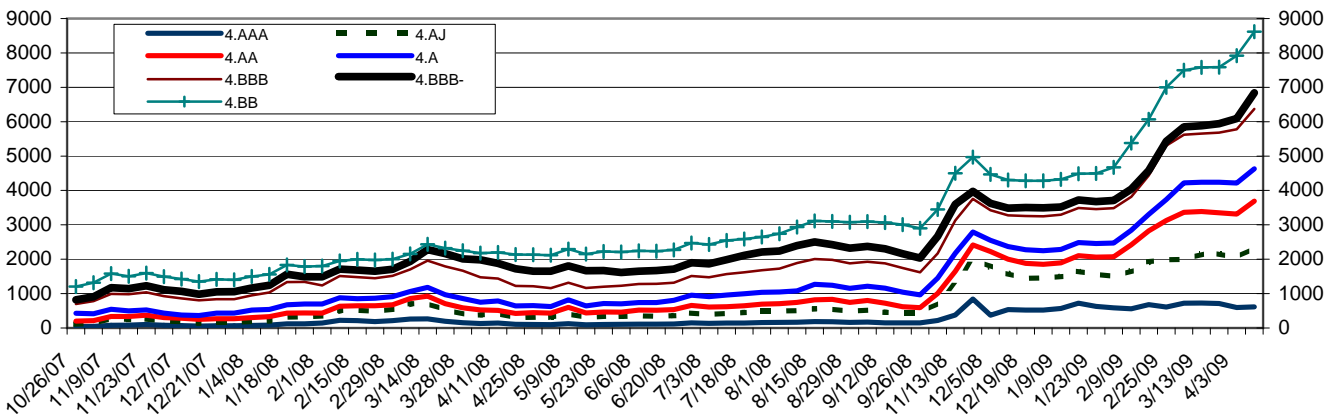
Source: Markit, CDS IndexCo. AJ tranche added on January 4, 2008.
© 2008 CMSA - Commercial Mortgage Securities Association, all rights reserved.



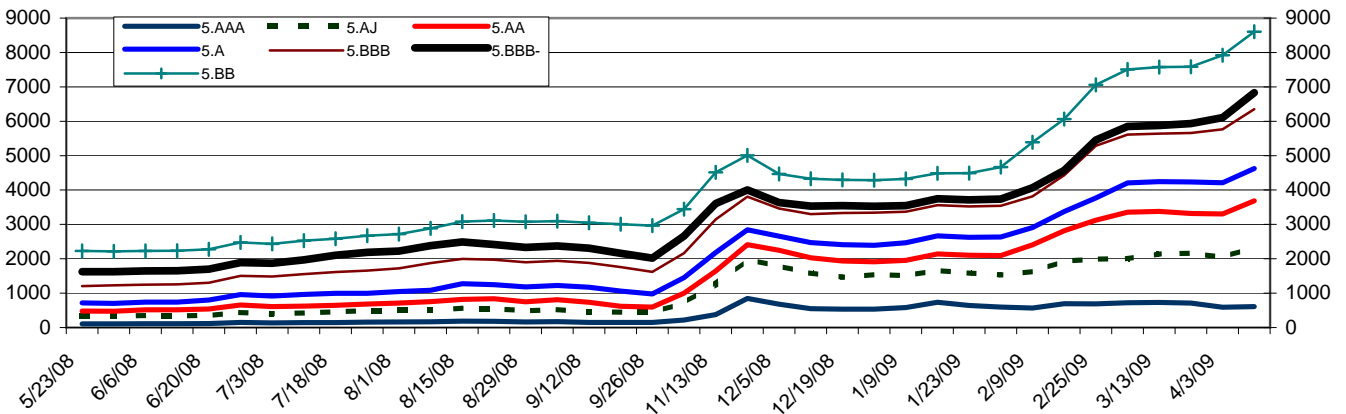
CMBX.3 Spreads

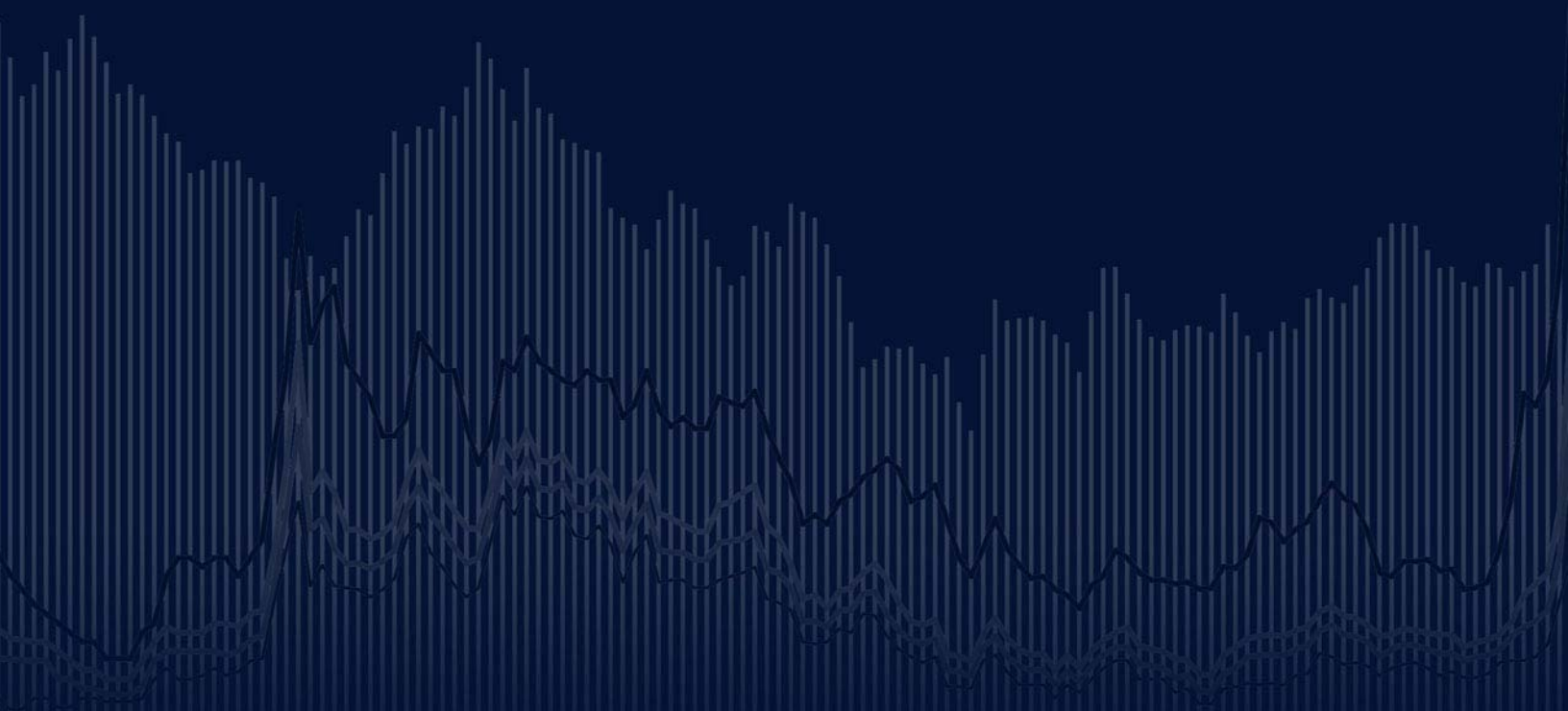


CMBX.4 Spreads



CMBX.5 Spreads





**COMMERCIAL MORTGAGE
SECURITIES ASSOCIATION**

Commercial Mortgage Securities Association, 30 Broad Street, 28th Floor, New York, New York
www.cmsa.org / 212-509-1844